

Making CONNECTIONS



FIBERARTS GUILD
OF PITTSBURGH
MEMBERSHIP SHOW
NOVEMBER 14, 2008
THROUGH
JANUARY 25, 2009



Fiberarts Guild
OF PITTSBURGH, INC.

Fiberarts Guild of Pittsburgh, Inc. is a nonprofit, member supported organization that promotes appreciation of fiber art and fosters its development and continuation. Fiber art includes any work that is created using a fiber technique or material.

The Fiberarts Guild produces FIBERART INTERNATIONAL, the only on-going exhibition open to textile artists from around the world.

Our members include students and emerging artists and supporters of the arts as well as nationally and internationally known fiber artists.

Your membership gives you access to:

- lectures
- workshops
- critique sessions
- skill-building
- exhibition opportunities



ON THE COVER:

SURFACE DESIGN ASSOCIATION AWARD

SHARON WALL

The Mother, The Daughter and The DNA Code

100" x 75"

surface design, batik, painted fiber reactive dyes, painted canvas, photocopy transfer machine and hand sewing; beads, bias tape, commercial



Making CONNECTIONS

"MAKING CONNECTIONS" is an apt metaphor not only for the ordering of fibers and elements into whole cloth but also for curating. Visual and conceptual relationships began to reveal themselves immediately in the process of witnessing the highly inventive and creative works submitted to the exhibition. Pushing their materials to limits, some of the artists dimensionalize their work seducing the viewer. The techniques of tying, stacking, weaving and molding materials create an amazing array of forms from the biomorphic to the geometric. Silk formed into tubes cascades down one wall while cereal boxes are woven together with added beads to form a receptacle/figure. Other pieces are an accumulation of small parts forming a greater whole. References to science, religion and popular culture are interwoven with stitching, collage and painting, manifesting a physical focus and bond. As an expression and a product of our complex visual and material culture, this exhibition is an even more appropriate metaphor for our mutual interconnectivity.

— Nancy Davidson

NANCY DAVIDSON is an accomplished artist who lives and works in New York City. She creates sculpture from inflatable weather balloons using humor to explore cultural issues. Davidson exhibits nationally and internationally and is widely published. www.nancydavidson.com



BEST IN SHOW

ATTICUS S. ADAMS

"slumber of the ancestors"

96" x 24" x 24"

coated aluminum mesh,
steel grommets, wire



KOR AWARD FOR MOST INNOVATIVE USE OF MATERIALS

AMY LIPSHIE

HRMPH

35.5" x 51.5"

cut, folded, glued, sewn
cereal boxes and beads



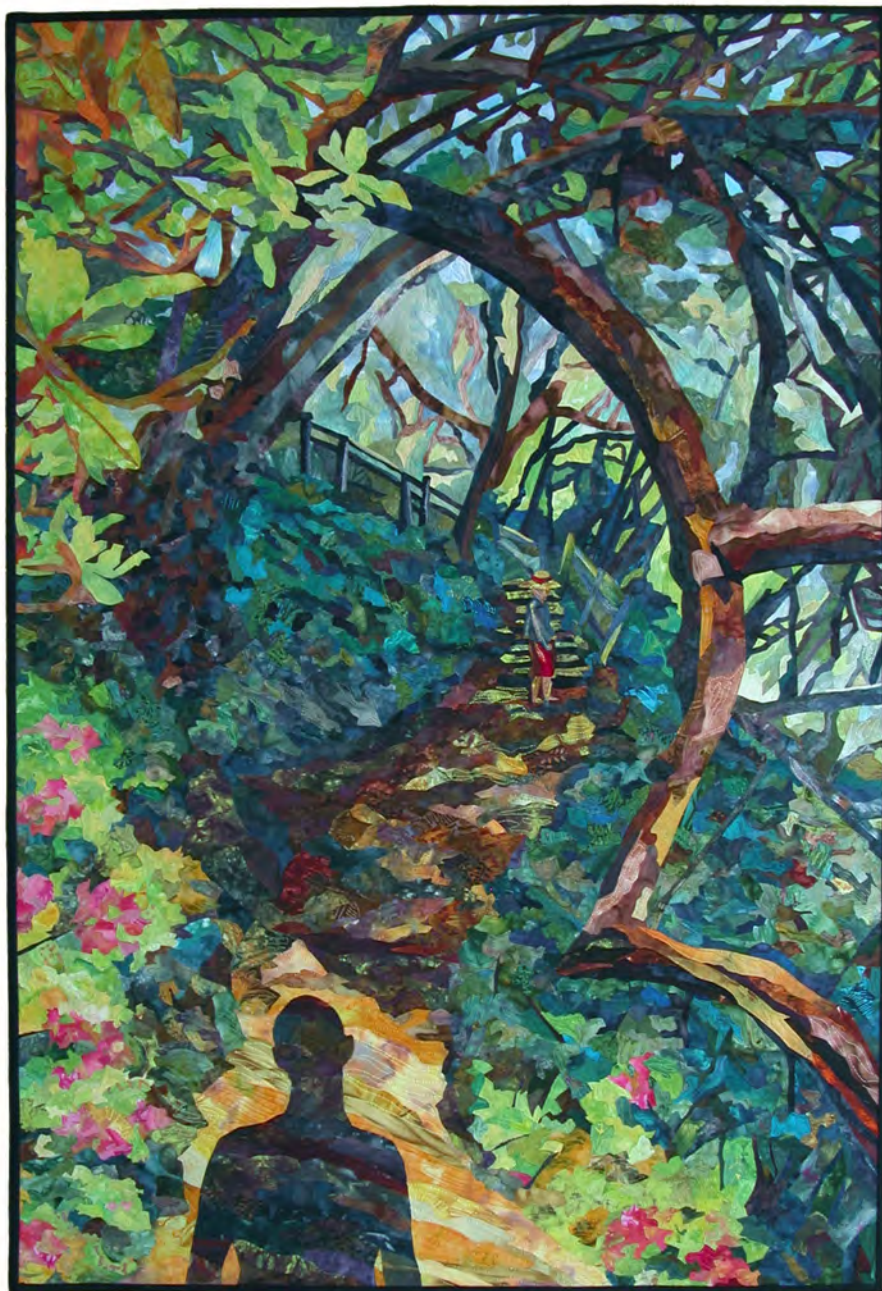
3 DOUDENS AWARD FOR BEST BOTANICAL WORK

PATRICIA MILFORD

Mothers and Daughters

4' x 24" x 24"

crochet and knitting yarns



HERTA DOUDEN AWARD FOR EXCELLENCE IN STITCHERY

FRANCINE MORISON

Return

42.5" x 28.75"

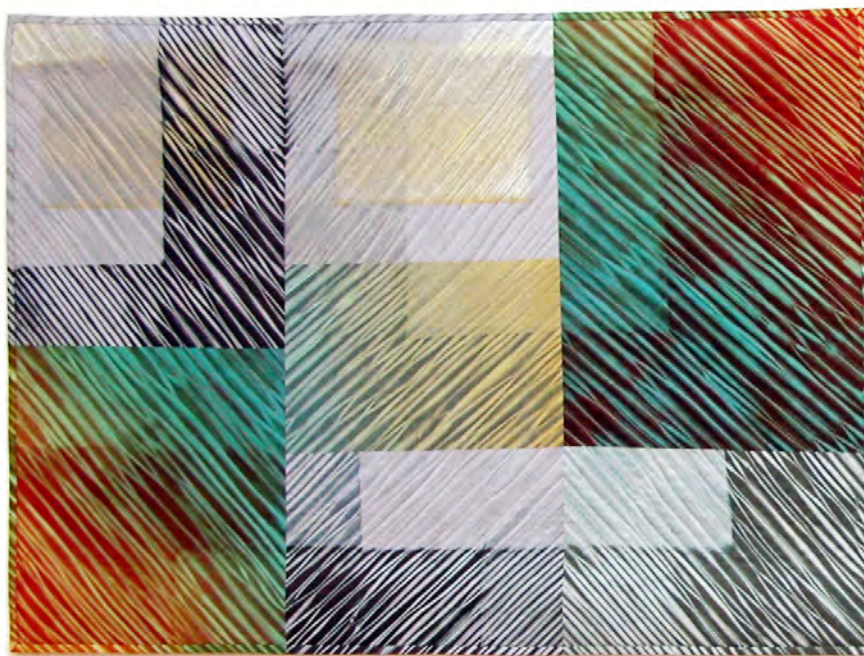
hand-dyed and commercial
fabrics, fused, machine quilted

JAN MYERS-NEWBURY

"Pentimento"

25.5" x 35.5"

machine pieced and quilted;
cotton dyed with procion
dyes in Arashi Shibori
techniques



AMANDA GROSS

Poet's voice, bird song

25" x 43"

hand pieced and
quilted; fabric



PENNY MATEER
My Dad's Pads
Things We Found in our
Parent's House #1
 2.5" x 4" x 9" each
 photo transfer, machine
 appliqué and quilted,
 hand beaded



ANGELA PASQUALE
Saturn
 7" x 7" x 1"
 hand-stitched on linen
 fabric; thread, linen fabric



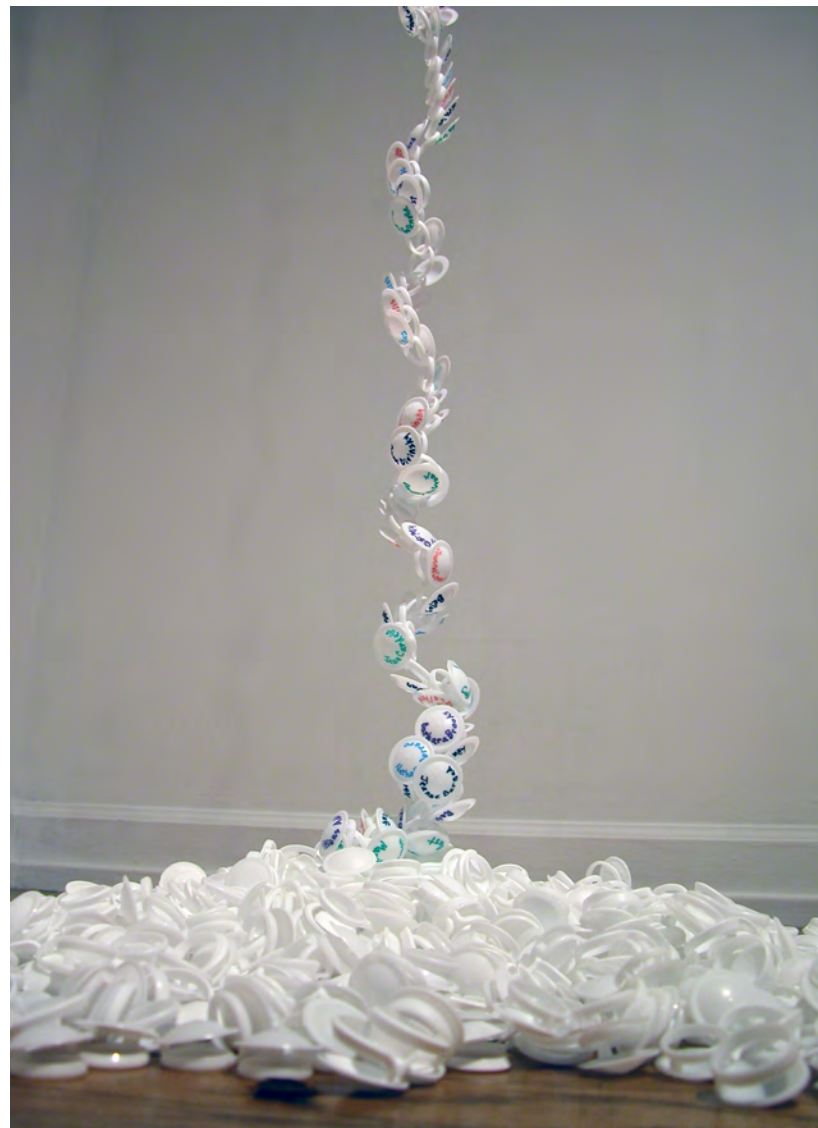
□ —————
LAURA TABAKMAN
*Floating Garden-
 Connected Through Air*
 variable size
 rusted silk, stiffened;
 steel wire



————— □
ATTICUS S. ADAMS
"summer cluster"
 40" x 14" x 9"
 aluminum mesh



ANNA DIVINSKY
Slits and Slots
 1.5" x 1.5" each
 variable size
 painting on silk



MARY TOWNER
FGP
 8' x 30" x 30"
 plastic milk carton
 caps, paint marker



□ **LAUREN ETLING**
Sharing our Perceptions
 12" x 24" x 12"
 crocheted yarn, polyester stuffing;
 Styrofoam mannequin heads



□ **LARISA DIVINSKY**
"Knot Again"
 10" x 10" 1.25"
 Sculpey polymer clay

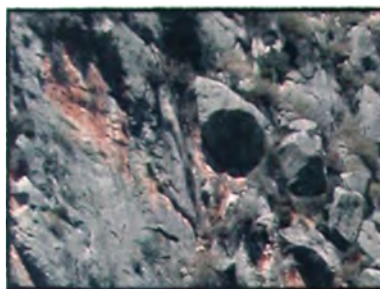
□
TINA WILLIAMS BREWER
*Badge of Authority, Allegiance
 and Membership*
 26" x 26"

hand applique and
 embroidery; photo transfer;
 cotton and silk thread,
 ribbon, seed beads, and
 mirrors



□
JANE OGREN
"Zip Zip"
Mixed Media
Transformation #219
 12" x 16"
 various colored and
 sized zippers, glue;
 painted texture





JOANNA COMMANDAROS
Visiting the Oracle at Delphi
 4' x 3' 2"
 digital prints on paper



SIGRID PIROCH
"Whispers"
 17" x 27"
 hand-woven Jacquard;
 silk warp, tencel weft





LAURA TABAKMAN

Disconnected

52" x 74"

altered photograph, digitally
printed on silk, mono-prints
on acrylic fabric



JAN MYERS-NEWBURY

Dilly Dilly

27.5" x 33.5"

machine pieced and quilted;
cotton; dyed with procion dyes
in Arashi Shibori techniques



HOPE GELFAND ALCORN

Lilies

48" x 72"

acrylic on industrial wool and a
negative transfer process

SIGRID PIROCH

Got Weaving?

15.5" x 27.5"

hand-woven Jacquard;
silk warp, tencel weft



□
LARISA DIVINSKY
Falling
20" x 16"
shibori on hand
painted silk



□
KAREN PAGE
Bozanka's Ice Breakers
variable size
crochet, acrylic yarn



□

SANDY KEPHART

From a Distance

29" x 23" x 1.75"

various textiles and sheer
overlays fused, stitched
by hand and machine;
worked onto Timtex for
shadow framing

□

BARBARA B. KUBALA

By Design

18" x 14" x 5.5"

micro knotting, green
turquoise and c-lon cord



FANNIE WHITE
"The Big Connection"
 44" x 44"
 appliqué and embellished
 with thread and other
 materials



KAY MILLER
Irrational Exuberance
 42" x 44"
 raw edge applique and
 paint on hand dyed
 and printed cottons;
 machine quilted





□
PATRICIA MILFORD
SPIRIT
 4' x 24" x 24"
 needle and thread woven;
 embroidery yarn, glass beads

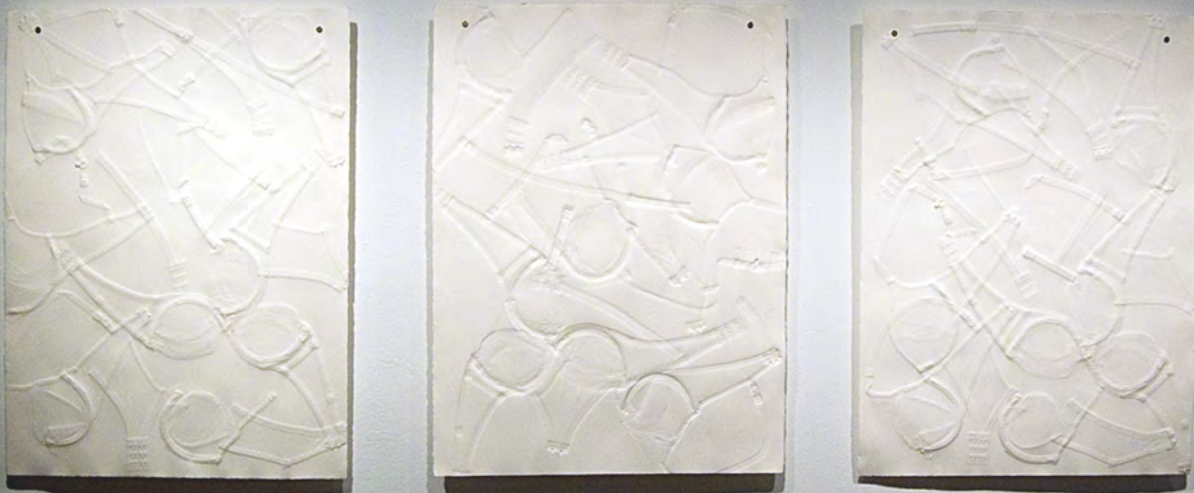
□
ANGELA PASQUALE
Snow Ball Landing
 10" x 9" x 8"
 self technique embroidery,
 embellished; thread, wire,
 Styrofoam



DAVID WATTS
"Putting on the Pounds"
25" x 18" x 11"
felt, fiberfill



MICHELLE BROWNE
Triptych, Intimate Impressions
30" x 22" each
brassieres embossed on Arches
100% rag paper





ANNA DIVINSKY
Almost There
 variable size
 hand painted and heat set silk

MELINDA RUSSELL
Coal
 23" x 37"
 hooked torn strips; wool
 and scissor-cut silk pulled
 through linen



RHONDA PARKER PEGG

Ravel

36" x 20" x 20"

Arashi shibori on rayon, wrapped
with thread (procion dye) cotton
rope fill welded iron armature

PASSLE HELMINSKI

Pet Me

15" x 14" 7"

tubular knit





□ —————
SUZANNE M. STEINER

Come Together #1

12" x 12.5"

quilted velvet, grommets, wire,
 fiber; wrapped coiling



□ —————
SANDY KEPHART

Six Fields

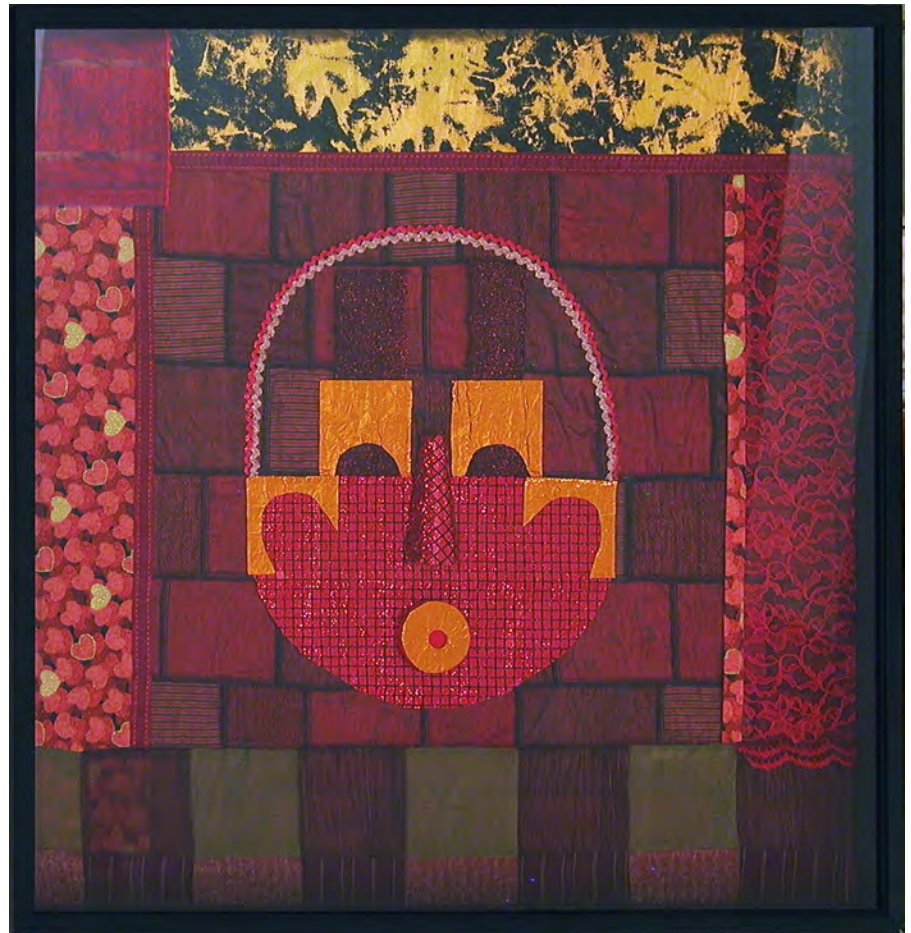
42" x 36"

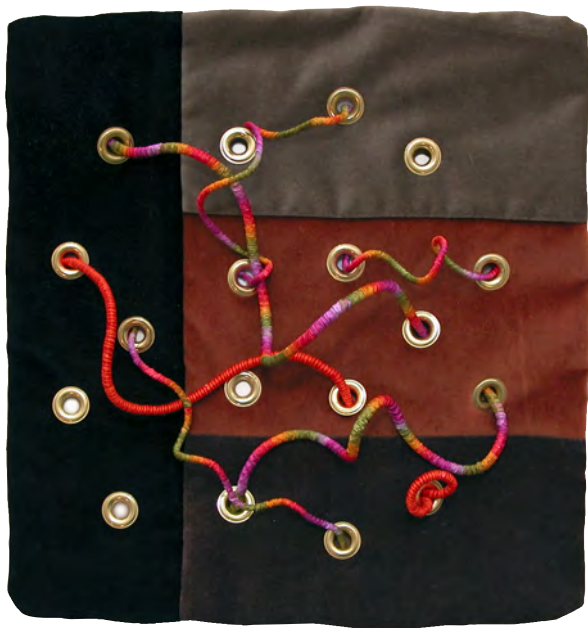
machine pieced and
 appliqué; cotton

SIGRID PIROCH
"A-MAZE-ING III"
 27.5" x 35.5"
 hand-woven Jacquard;
 silk warp, tencel weft



MAYOTA HILL
*Unmasked: Connecting
 Outside to Within*
 38" x 38" x 3"
 embellished fabric





□ SUZANNE M. STEINER

Come Together #3

13.5" x 13"

quilted velvet, grommets, wire,
fiber, wrapped coiling



□ TINA WILLIAMS BREWER

Yoke/ Ethiopian Princess

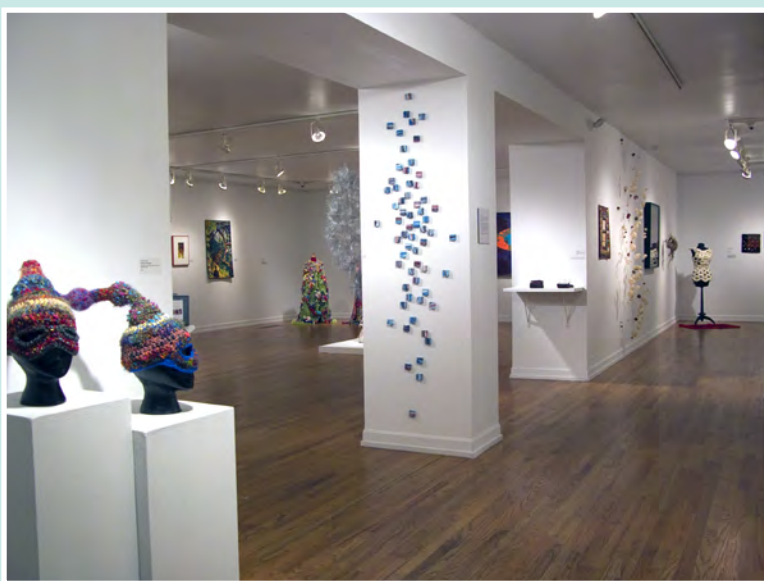
26" x 24"

hand applique and
embroidery, photo transfer;
cotton, silk, hand dyed cotton
and paper charms

WANDA M. SPANGLER-WARREN
Mounting Optimism
54" x 48" x 48"
paper, reed, twine, wood



RHODA TAYLOR
Reminders—
23" x 19.5"
machine pieced and
quilted; rusted, discharged
and dyed fabric scraps



Copyright © 2008 Fiberarts Guild of Pittsburgh, Inc.

The Fiberarts Guild of Pittsburgh, Inc. is a Member Guild of the Pittsburgh Center for the Arts.
Fifth and Shady Avenues • Pittsburgh, PA 15232-2922

Catalog designed and photographed by: Martha Wasik Graphic Arts, Inc.

www.fiberartspgh.org / fiberartinternational.org