



CELEBRATE FIBER
/ AT I.U.P. /

CELEBRATE FIBER AT I.U.P.

JUNE 2, 2013 – AUGUST 18, 2013

The University Museum • Sutton Hall • Indiana University of Pennsylvania

The University Museum of Indiana University of Pennsylvania is thrilled to host works from the Fiberarts Guild of Pittsburgh in this 2013 member exhibition. Two of our goals are “to challenge the way we see ourselves and the world in which we live” and “to bring the arts of the region together.” This show meets both goals in many ways. The Pittsburgh Post-Gazette called the Fiberarts Guild “One of the top 50 cultural forces in Pittsburgh” and we are delighted to share their wonderful work with the community of Indiana. A spectacular addition to our museum season, this exhibition gives you, our audience, the opportunity to explore an amazing mix of materials, themes, and fiber techniques.

William A. Double

Exhibition Coordinator

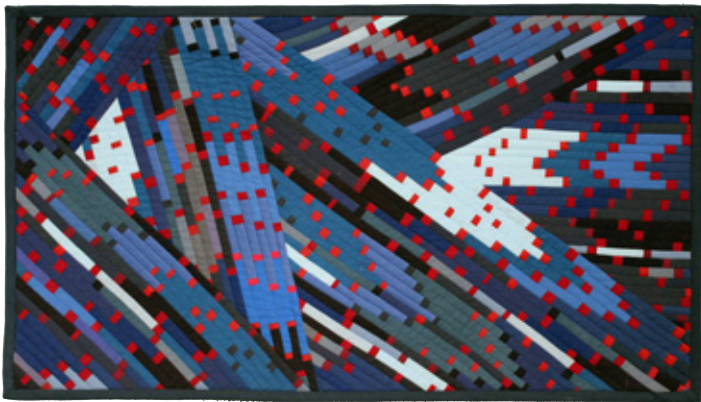
University Museum of Indiana University of Pennsylvania

This Membership Exhibition is an experiment with a different philosophy than most of our guild shows. The Exhibition Committee temporarily suspended several of our standard rules. Members were allowed to show pieces that had been produced in ANY previous time and that had been displayed in the area before. We did not have a theme or a juror and we aggressively encouraged all of our members to exhibit. We DID maintain the traditional definition of acceptable fiber work.

The museum director and curator, Bill Double, was present on our 'drop off' day. He looked at each piece to insure it was prepared for hanging and to make decisions regarding the space available in the museum. We took the chance that our members would self-evaluate and send us work of which the guild could be pleased.

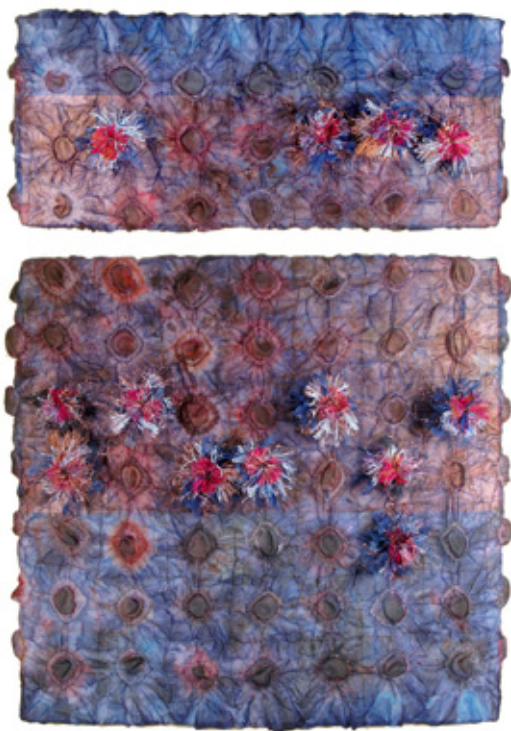
The result is an exhibit of over 90 pieces made by 55 different artist members. There is plenty of color and variety, with subjects ranging from humorous to very thought provoking, and those who express the love of pure design. The quantity of pieces suit's the museum space very well. The quality of the work will be left to the decision of the viewer — but I, for one, could not be more proud.

Barbara Kubala
Exhibition Chair



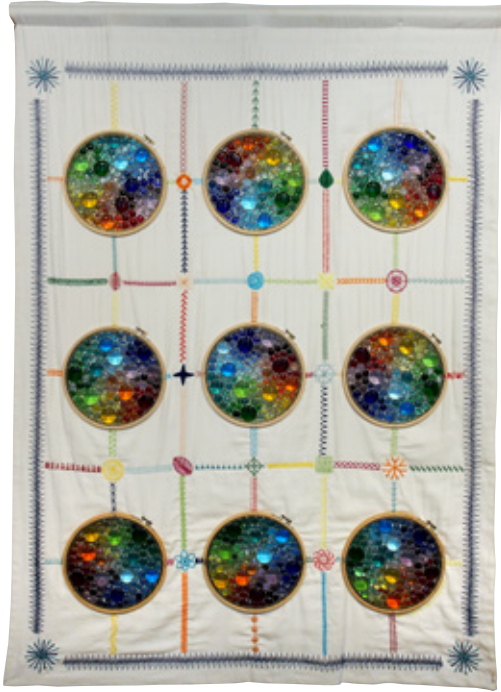
NORMA A. LIPSCOMB Blue Blazes || 19" x 33" commercial cotton; strip quilted

PENNY MATEER "What's Going On?" #7 Protest Series || 92" x 61" x .5" commercial and vintage fabric, digitally printed; appliquéd, quilted



JANE OGREN **Spirits on Cloth #522** || 18" x 24" x 3.5" hand-dyed fabric, commercial fabric, embroidery floss; raw-edge appliqué, embroidered

SHERRI ROBERTS **Swim Beneath the Pain** || 18" x 29" x 1" silk, paper, yarn, floss, cotton, metal, poly-fill, shells; machine couching, rolled paper beading, appliquéd



LESLIE CALHOUN Hmmm..... || 60" x 48" x 1" cotton, embroidery floss, fishing line, wood hoops, glass, copper foil; stained glass, embroidered, quilted

HOPE GELFAND ALCORN Riding the Startrails || 36" x 36" x .25" acrylic paint, industrial wool



ROBIN CRAWFORD **On The Bend** || 50" x 29" cotton fabric; strip pieced, hand quilted



MAYOTA HILL **Ascension: Risen' Up and Bustin' Through** || 43.5" x 24" x .5" ribbon, mesh, fringe, netting, wire, wood, found objects; embroidered, quilted



JURORS COMMENDATION

MARTHA RESSLER **Pink Wall** || 11.25" x 18.5" x .5" original photos printed on fabric, found objects; thread painting, free-motion quilted

MICHELLE BROWNE **Friezes** || 45" x 45" x 11" paper plate lithography on fabric; rusted, dyed, constructed



CAROLYN CARSON **Wild Woman** || 68.5" x 44" cotton batiks, wool handspun by artist, paint; machine quilted, painted



PATRICIA KENNEDY-ZAFRED **Tagged** || 31.75" x 24.25" hand-dyed fabric, acetate, rayon, metallic threads; monoprinted; pieced, quilted



SYLVIA LEO **Forest Fantasia** || 26" x 28" cotton; pieced, quilted

KIRSTI L. ADKINS **Vietnam** || 10" x 8" x 2" encaustic painting, mixed media with fiber elements; encaustic



SECOND PLACE

CAROLYN CARSON **Birth of Venus** || 62" x 40.5" cotton batiks, wool handspun by artist, paint; discharged, machine quilted, painted

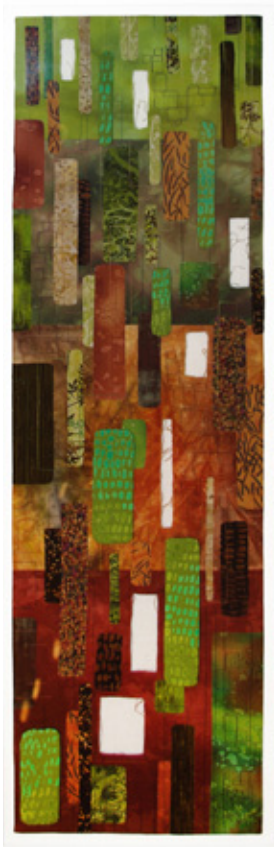
DOROTHY de GROAT **Artichokes** || 21" x 21" cotton, Japanese cotton base; fused





BETTY ELIAS Gypsy & The Red Boot || 45" x 25" cotton, acrylic paint, metallic accents; machine pieced, fused

JUDITH GENTILE Caricature One || 15" x 14" x 1" synthetic fabrics, batting, glass beads; hand stitched



SANDY KEPHART *Sticks & Stones* || 43" x 18" x 1" cotton batik, hand-dyed; pieced collage, free-motion stitched



MEDIS KENT *Night At The Opera* || 29" x 31" fabric; hand-painted batik



MAYOTA HILL **The Strength and The Majesty of Wisdom** || 56" x 55" ribbon, metal, lace, beads, candy wrappers, rug liner, metallic paper; quilted, appliquéd

BETTY ELIAS **Marlene II** || 49" x 20" hand dyed fabric; machine pieced, hand quilted



HOPE GELFAND ALCORN **Picasso's LSD** || 36" x 36" x .25" acrylic on industrial wool; negative transfer



JUDITH GENTILE **Caricature Two** || 12" x 10" x 1" recycled blouse, synthetic fabrics, batting, glass beads; hand stitched



ANNIE LAWRENCE **New Zealand in Broom** || 22" x 14" x 2" Merino wool, seed beads; wet felting, needle felting



ROBIN CRAWFORD **Create** || 47" x 17.75" cotton fabric, floss thread; dyed, stamped, embroidered, machine and hand stitched



DONNA BOGUSTO KEARNS **Formations** || 20" x 20" x 1.5" paint, hand-dyed fabric, brass



ADRIENNE HEINRICH **In Skin** || 7.5" x 18" x 3" silicone, hair; cast



CAROLE RIES NORULAK **Persian In the Parlor** || 43" x 36.5" x 1" cotton, polyester fiberfill; log cabin quilted, *silk-screened images by Thomas J. Norulak*

SHAWN QUINLAN **Candy Land** || 53" x 47" commercial fabrics; pieced, appliquéd, machine quilted



DONNA BOGUSTO KEARNS **Quilters Nightmare** || 36" x 40" x 1.5" fabric, yarn, netting, paint; mixed media



BARBARA KUBALA **RED: A Neckpiece** || 17.5" x 14" x 5.5" nylon cord, beads; half-hitch knotting



FANNIE WHITE **A Teenage Brain** || 36" x 36" commercial cotton; pieced, fused, machine stitched, quilted

SHAWN QUINLAN **The Fix Is In** || 49" x 43" commercial fabrics; pieced, appliquéd, machine quilted



PENNY MATEER Listen to Sly... Isn't it About Everybody || 26" x 23.5" commercial fabric, beads, sequins, found objects; appliquéed, beaded, quilted

AMANDA GROSS Kimono #4 || 72" x 78" x 2" newspaper bags, newspaper, mixed media; machine sewn; hand painted



ROBERTA GESSNER HODGE **Sleeping Basket Star Fish - A Bottom Feeder** || 8.5" x 14" x 8.5" copper wire thread, cotton, dye; paper wrapped, knotted

BARBARA KUBALA **Woolen Moss** || 28" x 51" dia. 15" x 22" base natural branch, yarn, roving, window screen; needle felted



HEATHER BOND **Fruits of Labor** || 24.75" x 13.75" loom weaving, appliquéd vintage fabric, photo transfer; hand embroidered, stitched



TINA WILLIAMS BREWER **Rosetta Stone and the Diaspora** || 43" x 40" silk, cotton, silk-screen; hand stitched



SYLVIA LEO **Graceful Trees** || 44.5" x 32" cotton; pieced, machine quilted



DOROTHY de GROAT **Raindrops** || 21" x 21" cotton fabric, Japanese cotton; fused



THIRD PLACE

SHERRI ROBERTS Bubbling || 21" x 79" x .5" silk, paper, embroidery floss, cotton; machine couching, rolled paper beading, appliquéed

SYLVIA MARKO Pretty Maids All in a Row || 6.625" x 27" x 7.25" perforated paper embroidery, cotton floss, black work, counted thread

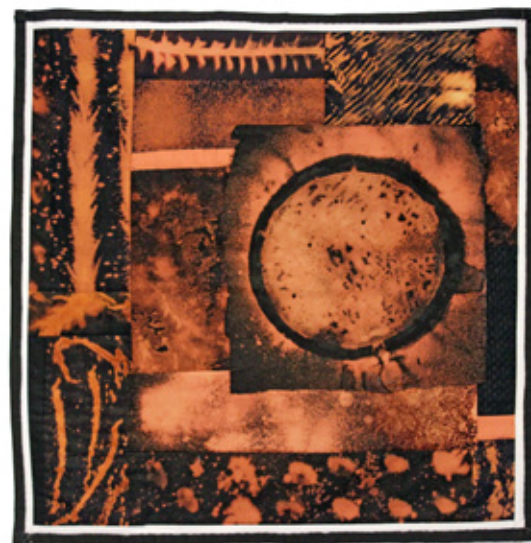


CLAUDIA NEELEY **Buttressed Up St. Bridget Visits Haiti** || 19.5" x 16" cotton, buttons, lace, beads, thread; machine pieced, embroidered, beaded

CAMILLA BRENT PEARCE **Rustbelt Paisley** || 13.5" x 17" cotton, silk chiffon, metallic thread; rust-dyed, hand stitched



MEDIS KENT Omen of the Raven || 29" x 25" hand-painted fabric



NORMA A. LIPSCOMB Toward the Black Hole || 24" x 23.5" black cotton; discharge printed



CAROLE RIES NORULAK **Chateau 1782** || 54.5" x 45.5" x 1" cotton fabric, polyester fiberfill; log cabin quilt representation of Aubusson carpet

SUE NEFF **A Paper of Pins** || 23" x 29" commercial fabric; machine and hand stitched



JANE OGREN **Diptych: Jefo #632** || 44" x 30" hand-dyed sheer fabric, wire, thread, multi-colored hand dyed polyester; heat and pressure set

ROBERTA GESSNER HODGE **Triptych: Coral Reef Zygotes Born on an August Full Moon** || 14.75" x 11.5" x 2.5" linen, burlap, wool, metallic beads, cotton, metallic threads, pins; stitched, beaded, knotted

JURORS COMMENDATION



MARY TOWNER *Gameboard: Whose Move Is It?* || 7" x 22.5" x 25.5" mixed media, digital imagery

RHONDA PARKER PEGG *Ravel* || 36" x 20" x 20" cotton, rope, rayon, procion dye, thread, iron; welded, Arashi shibori, wrapped



ANNIE LAWRENCE *Lost in the Trees* || 48" x 35" wool; wet felting



DOUDEN AWARD FOR BEST BOTANICALLY INSPIRED WORK

SUE NEFF *Nature Print Quilt* || 84" x 84" white muslin, ink; hand painted, stitched



MARTHA RESSLER Shelter Lost: Crucified on the Cross of Corporate Greed || 12" x 13" canvas, fabric, thread; needle felting, embroidered, machine stitched

CAMILLA BRENT PEARCE Rustbelt Shade Garden || 13" x 15" silk chiffon, antique kimono, silk and metallic thread; rusted, transfer dyed, hand stitched



CATHERINE (KITTY) SAVEL **Vintage** || 34" x 40" cotton; crochet



KATHRYN SCIMONE STANKO **Adornment in Mixed Metals** || 17" x 13" x 3" copper and sterling wire; handwoven, oxidized



MARY ANN KLUSSMANN **Connected by Katrina: A Tribute** || 18.5" x 48.5" x .5" cotton, photo transfer, maps, polyester batting; pieced, quilted

JEAN THOMAS **Whirlwind** || 31" x 27" x .5" silk, fabric, batting, thread; hand-painted, machine stitched, quilted



JOHANNA ROSZNER *The Killing Machine WWII* || 50.5" x 80" x .125" cotton, commercial materials; machine appliquéed, machine quilted

KATHRYN SCIMONE STANKO *Millefiori In Copper #2* || 17" x 13" x 3" copper wire; handwoven, treated



SUE SCHNEIDER **Girls' Guide to Outdoor Adventure** || 8" x 9" x 2" fabric, antique buttons, plastic insects, obtainium; embroidered, appliquéd

BRENT RUKA **Unveiled** || 23" x 23" x .125" commercial cotton, felt; fused



JURORS COMMENDATION

BRENT RUKA Flat Husband || 70" x 21" x .25" commercial cotton, felt; fused, quilted



KITTY SPANGLER Pittsburgh Neighborhoods, Tied Together || 88" x 100" x 1" commercial fabrics; hand-tied, hand-pieced, quilted



SUE SCHNEIDER **Ladies of Fortune** || 7" x 7" x 1" fabric, antique buttons, fortunes, obtainium; embroidered, appliquéed

WANDA M SPANGLER-WARREN **Cardio** || 24" x 18" x 12" paper, reed, wood, fluorescent light; constructed



PATRICIA A SHEAHAN My Name is Not Mona Lisa || 22" x 15" x 6" fabric, buttons, wood, mixed media; assemblage



MICHELLE BROWNE Hooking Up/ The Intimate Illumination || 60" x 30" x 30" old brassieres, safety pins, light kit, wire



BEST OF SHOW

URSULA SCHWARTZ Three Fairy Tales (Rapunzel, The Girl Without Hands, The 6 Swans) || 39" x 45" fabric, fabric paint; embroidered, surface design

WANDA M. SPANGLER-WARREN Dove || 54" x 38" x 18" paper, reed, wood, fluorescent light; constructed



RHODA TAYLOR **Study in Rust** || 26" x 18" cotton fabric; rust printed



JURORS COMMENDATION

LAURA TABAKMAN **Naturaleza Muerta** || 8" x 11" x .75" silk, cardboard, paper, cord, altered photographs, digitally printed; constructed



URSULA SCHWARTZ Woman Tree or The Art of Loss || 25" x 42" fabric, fabric paint; embroidered, surface design

RHODA TAYLOR Orbits Interrupted || 35" x 23" hand-dyed and commercial cotton fabrics; machine pieced and quilted



JURORS COMMENDATION

ANN A TAYMANS **Marble Columns** || 26" x 18" x 4.5" poly-cotton, embroidery floss, stuffing, boards; smocked

CHARLOTTE TOAL **Julia Butterfly** || 11.625" x 12.625" fabric, ribbon, beads; fabric collage, hand embroidered, beaded





ANN A. TAYMANS **Daughters** || 19" x 23.5" x .5" photo-transfer, cotton, quilt batting; pieced, quilted, embroidered

SHAUNA FRANTZ **Rabbit Husbandry: An open study** || 28" x 18" rabbit hide, reclaimed fabric, reclaimed beads; sewed



SANDRA TRIMBLE **Emergence 5** || 52" x 30" x 6" wool; wet and needle felted



JEAN THOMAS **Time Made Visible** || 6" x 9" x 1.25" cotton, batting, thread, photographs; photo transfer, machine stitched



FANNIE WHITE **A Parterre Garden** 57" x 56" cotton; pieced, quilted

LAURA TABAKMAN **Once Upon a Time** 22.5" x 26" silk, cotton, altered photographs; digitally printed on rusted, burnt fabrics



RUTH COVER MEMORIAL AWARD



MARTHA WASIK Fritz, Gustav, and Me 44" x 40" cotton, hand-printed original etchings; pieced

MARY TOWNER A Moving Diary: Three Days in July 48" x 52" x .5" mixed fiber, moving tags



CAROL BETH YOFFEE **Under the Sea** || 12" x 8" x 6" beads, sterling silver clasp; bead weaving

SANDRA TRIMBLE **Icarus Over Juno** || 18" x 18" wool, cotton thread, photo transfer; wet and needle felted, stitched, image transfer



CHARLOTTE TOAL **Gardenscape** 16.5" x 21" fabric, embroidery floss; cyanotypes, shibori, hand embroidered, photo transfer, appliquéd

PHOTO CREDITS:

Staci Offutt: pages 2-L, 4-L, 5-L, 8-L, 10-R, 11-R, 12-L, 13-R, 14-L-R, 15-L, 20-L, 22-L, 24-L, 25-L-R, 26-L, 27-R, 28-R, 29-L, 32-L, 37-L, 38-L, 40-L, 41-L-R, 42-L, 47-L

John Sanderson: page 2-R

Larry Berman: page 7-R

Tom Fitzpatrick: page 19-L

All other photos supplied by the artists.

© 2013 Fiberarts Guild of Pittsburgh, Inc.

fiberartspgh.org

CATALOG DESIGN: Martha Wasik Graphic Arts Inc

INDEX

Adkins, Kirsti L.8
Alcorn, Hope Gelfand4, 13
Bond, Heather21
Brewer, Tina Williams.....21
Browne, Michelle.....6, 37
Calhoun, Leslie4
Carson, Carolyn7, 9
Crawford, Robin5, 14
de Groat, Dorothy9, 22
Elias, Betty.....10, 12
Frantz, Shauna42
Gentile, Judith10, 13
Gross, Amanda19
Heinrich, Adrienne.....15
Hill, Mayota5, 12
Hodge, Roberta Gessner20, 27
Kearns, Donna Bogusto15, 17
Kennedy-Zafred, Patricia7
Kent, Medis.....11, 25

Kephart, Sandy.....11
Klussmann, Mary Ann.....32
Kubala, Barbara17, 20
Lawrence, Annie.....14, 29
Leo, Sylvia8, 22
Lipscomb, Norma A.2, 25
Marko, Sylvia.....23
Mateer, Penny2, 19
Neeley, Claudia.....24
Neff, Sue26, 29
Norulak, Carole Ries.....16, 26
Ogren, Jane3, 27
Pearce, Camilla Brent.....24, 30
Pegg, Rhonda Parker.....28
Quinlan, Shawn16, 18
Ressler, Martha.....6, 30
Roberts, Sherri.....3, 23
Roszner, Johanna.....33
Ruka, Brent.....34, 35

Savel, Catherine31
Stanko, Kathryn Scimone31, 33
Schneider, Sue34, 36
Schwartz, Ursula.....38, 40
Sheahan, Patricia A.....37
Spangler, Kitty35
Spangler-Warren, Wanda M.....36, 38
Tabakman, Laura.....39, 44
Taylor, Rhoda39, 40
Taymans, Ann A.41, 42
Thomas, Jean.....32, 43
Toal, Charlotte.....41, 47
Towner, Mary.....28, 45
Trimble, Sandra.....43, 46
Wasik, Martha45
White, Fannie18, 44
Yoffee, Carol Beth.....46



fiberarts guild of pittsburgh, inc.