

A Fiberarts Guild New Year

Workshops, critiques, two membership shows, potlucks and parties—we have another inspiring year coming up.

To kick it all off, Norma Lipscomb will once again open her home in Highland Park for our Welcome Back Potluck on Thursday, September 6 from 6-9pm. Directions to Norma's are on page 3. Bring a dish to share and any summer projects or news you'd like to share. This is a fun chance to see old friends and make new ones—we have many new members we're looking forward to meeting.

Then we launch into our inspiring program schedule, starting later in September, of lectures, critiques, workshops and fiber conversations. Current program committee Deb Meteney and Laura Marin, and incoming chair Betsy Coleman (2008), have devised a remarkably varied schedule that will appeal to new and long-time members alike. Dates and descriptions for the entire 2007-08 program schedule are on pages 1 & 2. Mark your calendars or tape these pages to your refrigerator or bulletin board so you don't miss a thing!

From the Editors

It's a new year! As we're sure you noticed with the May and June newsletter issues last year, we have a new look. Thanks to graphic artist and Guild member Martha Wasik, who joined the staff in April, we will continue to look great.

Remember, this is *YOUR* publication, and we welcome any contributions you'd like to make. Please send us fiberart news you'd like to share with your fellow members about yourself, your community, events, resources, websites (especially your own), books, etc. We welcome articles, reviews, suggestions, and feedback. Many thanks in advance for your contributions!

Jean Thomas / 412-661-0457
jw77@verizon.net

Mary Towner / 724-969-0369
mltowner2@yahoo.com

PROGRAMS

SEPTEMBER 6 THURSDAY 6-9PM

POTLUCK WELCOME PARTY at Norma Lipscomb's home in Highland Park (see page 3)

SEPTEMBER 26 WEDNESDAY 7PM

FIBER CONVERSATIONS: Joanne Baxter's Studio in Wexford (Directions on page 3)
Joanne creates dolls and wearable art.

OCTOBER 6 SATURDAY 9AM-4PM

WORKSHOP: Carol Ann Rafferty — Creating Devore Fabric
Sixth Presbyterian Church Basement, Forbes & Murray Aves., Squirrel Hill
\$45 Members / \$60 Non-members / Materials Fee \$25

Devore, French for *devour*, has been used to create a burnout effect in the cellulose component of silk or polyester blended fabric since the 1800s. The technique was revived in the 1990s by Danish textile chemist Joy Boutrup. Participants will gain a working knowledge of the process including: choosing and preparing fabrics, mixing and storage of print paste, and options for creating patterns. Application techniques, dyeing, care of finished fabrics and safety procedures in the studio will be discussed. There will be demonstrations on various types of fabrics.

Carol Ann Rafferty is a member of our Guild and currently Adjunct Professor in the Buffalo State College Fiber Design Program. Her work has been exhibited in national and international shows including *Fiberart International 2007*.

OCTOBER 19 FRIDAY 3-5PM

CRITIQUE: Hosted by Barb Kubala
Sixth Presbyterian Church Chapel, Forbes & Murray Aves., Squirrel Hill

OCTOBER 19 FRIDAY 7-9PM

LECTURE: Hollie Heller, Mixed Media Fiberartist
Sixth Presbyterian Church Chapel, Forbes & Murray Aves., Squirrel Hill

Hollie Heller has an MFA in Textile Design from the Rochester Institute of Technology. She has taught workshops and given seminars nationally, including at the Quilt Surface Design Symposium in Athens, Ohio and the International Surface Design Conference at the Kansas City Art Institute. She began as a weaver and feltmaker and now experiments with constructed and layered surfaces using paper, photo transfer and collage. www.hollieheller.com

NOVEMBER 9 FRIDAY 3-5PM

CRITIQUE: Hosted by Barb Kubala Location TBD

NOVEMBER 9 FRIDAY 7-9PM

LECTURE: Anne Kmieck — Out of the Closet and Into the Fire: Dress as a metaphor for the female condition
Location TBD

Anne T. Kmieck's longtime examination of historical views of the female condition finally surfaced in her art after a working trip to Mexico in 1997. Her observation of indigenous people's celebration of their traditions and language through their clothing inspired her to use dresses as a metaphor for the female body. Anne has a BFA from the Cleveland Institute of Art and an MA from Case Western Reserve University. She teaches at Hawken Upper School in Gates Mills, Ohio, where her students are a continuous wellspring of inspiration. Her work has been exhibited in numerous shows throughout the northeast Ohio region as well as in the Chicago area. www.kmieckgallery.com

JANUARY 17 THURSDAY 10AM-1:30PM

POTLUCK FUNDRAISER & LECTURE: Quilt Artist Shawn Quinlan
PCA, Simmons Hall, 6300 Fifth Ave., corner of Fifth & Shady Ave., Shadyside

Shawn Quinlan is a member of our Guild and has exhibited his work nationally. In 2007 he had a solo exhibition at the Pittsburgh Center for the Arts and an invitational exhibit at the Mattress Factory in 2006. Blogger Garth Johnson (*Extreme Craft*) wrote about Shawn's work: "His raw material is taken from wall hangings and oddball commercial fabrics—not just from the piles of fat quarters... There is also an improvisational quality at work in his quilts—something only rarely seen in a scene that is obsessed with order and pattern."

FEBRUARY 7 THURSDAY 3-5PM

CRITIQUE: Hosted by Barb Kubala

Sixth Presbyterian Church Chapel, Forbes & Murray Aves., Squirrel Hill

FEBRUARY 7 THURSDAY 7-9PM

ORIGAMI VALENTINE PARTY with Sue Neff

Sixth Presbyterian Church Basement, Forbes & Murray Aves., Squirrel Hill

Sue will teach us how to fold paper to make heart cards, a heart ring, a 3-D heart pendant, and even a "beating heart" (action model). Sue is a Guild member and founder of the Origami Club of Pittsburgh. She has taught Origami at CMU and the National Origami Convention in New York City.

FEBRUARY 21 THURSDAY 7PM

FIBER CONVERSATIONS: Quilt Artist Louise Silk

Louise Silk's Studio, 2205 Mary St., #201, South Side

MARCH 14 FRIDAY 7-9PM

LECTURE: Renee Harris — Embroidery on Handfelted Cloth

Sixth Presbyterian Church Chapel, Forbes & Murray Aves., Squirrel Hill

Renee Harris graduated with a major in painting and printmaking and a minor in illustration from the Art Academy of Cincinnati. After seeing the work of artists using felted wool, she was inspired by the possibilities of painting with this medium. After taking a class to improve her skills, she realized her passion of using hand embroidery as a pencil and felted wool fabric as a canvas to create mostly narrative imagery. Renee exhibits her work nationally through major craft shows, galleries and curated exhibitions. She lives and maintains a full time studio in Cincinnati, Ohio. She received the Exhibitor's Choice Award (Bronze) at *Smithsonian Craft Show* in 2006. www.reneeharris.net

MARCH 15 SATURDAY 9AM-4PM

WORKSHOP: Rae Gold — Shibori on Wool and Silk

Sixth Presbyterian Church Basement, Forbes & Murray Aves., Squirrel Hill

\$45 Members / \$60 Non Members / Materials Fee TBD

Shibori is a term meaning resist. Students will wrap, fold, stitch, clamp, tie and dye. However, this workshop is a little different since the concentration will be on wool (and silk) and trying various old techniques in a new way. Also, hot water dyeing with acid dyes will give more spontaneous results than using the traditional cold water dyes.

Rae Gold is a long-time member of our Guild and an established nationally-known designer/artist. She specializes in machine-knit, felted and hand-dyed wool clothing, often shibori dyed, that has a beautifully soft unrestrained quality. A BFA graduate of Carnegie Mellon University, Gold has shown her work at the *American Craft Council* in Baltimore, *The Philadelphia Craft Show*, *The Washington Craft Show* and the *Smithsonian Women's Committee* in Washington, DC.

APRIL 11 FRIDAY 7-9PM

LECTURE: Winnie Radolan — Handmade Paper as an Artform

Sixth Presbyterian Church Chapel, Forbes & Murray Aves., Squirrel Hill

Considering the over 2,000-year history of papermaking, much of which was spent producing paper as a substrate for communication, handmade paper as an art form is a "new baby" of roughly the last 50-60 years. Winnie will briefly describe her own papermaking journey showing slides of her work and the Guild of Papermakers, which show the diversity of "voices" possible in this exciting artistic medium.

APRIL 12 SATURDAY 9AM-4PM

WORKSHOP: Winnie Radolan — Plant Fibers for Papermaking

Sixth Presbyterian Church Basement, Forbes & Murray Aves., Squirrel Hill

\$45 Members / \$60 Non Members / Materials Fee TBD

Our gardens are filled with wonderful fibers, which can be simply prepared to create colorful and distinctive handmade papers. Learn when and what to harvest, as well as how to cook and "beat those plants to a pulp". You'll be creating paper from the cellulose in vegetables, day lilies, iris leaves and more. Experiment with stenciling and layering different fibers to design your surface. Embed flat inclusions between layers. Learn ways to work your handmade paper into your own unique stationary, drawings, paintings, collages and other 2D expressions (great for printmaking.) No experience necessary.

Winnie Radolan is the founding director of Winnie's Paperworks and the Guild of Papermakers. She is a roster artist for the NJ and PA State Councils on the Arts residency programs and a columnist for the *Hand Papermaking Newsletter*. She has a BS in Art Education from Moore College of Art.

MAY 2 FRIDAY 7-9PM

LECTURE: Judy Dominic — *Bogolanfini - It's All in the Mud*

Sixth Presbyterian Church Chapel, Forbes & Murray Aves., Squirrel Hill

Journey to Mali, Africa via images, stories, song, and dance. Find out about the wonderfully rich dyeing tradition of bogolanfini, then hear about its transformation in Harrison, Ohio! An abundance of samples will be shown to enrich the experience.

MAY 3 SATURDAY 9-4PM

WORKSHOP: Judy Dominic — Mud Cloth (Bogolanfini Modified)

Sixth Presbyterian Church Basement, Forbes & Murray Aves., Squirrel Hill

\$45 Members / \$60 Non Members / Materials Fee \$7

The strikingly simple white design on black background cloth represents the serious artistic manner of telling the stories of village life in Mali, Africa. Learn about the traditional method of bogolanfini, dying cotton cloth with mud, as well as how that process can be modified to work outside of Mali. During the workshop you will create your own story designs using local muds on cotton and other natural fiber cloth. Connect with the earth and gain an appreciation of the Mali culture.

Judy Dominic has a loom weaving background and has been creating with fibers since 1979. Her use of naturals and odd materials has become a signature as she recycles most anything that stands still into her fiber art. Judy displays her work and curates basketry exhibits throughout North America and teaches internationally. Her fiber-related articles have been published in numerous national and international fiber art magazines. She was honored with the Post-Corbett 2001 Visual Arts Award for enhancing the quality of community life through art. www.midwestbasketry.com

CAROL ANN RAFFERTY **CREATING DEVORE FABRIC**

NAME _____ # OF RESERVATIONS _____

ADDRESS _____

CITY _____ STATE _____ ZIP _____

PHONE _____ E-MAIL _____

FEE: **\$45.** Guild members **\$60.** non-members **\$25.** Materials fee Amt enclosed \$ _____

Please make checks to Fiberarts Guild of Pittsburgh, Inc. and mail to:
 Questions: Contact Deb at 724-348-9087 or dmeteney@comcast.net

Deb Meteney
 1070 Sugar Run Road
 Venetia PA 15367

Dues Reminder

The Guild's fiscal year begins the first day of July and ends on the following 30th day of June. Dues can be mailed now to Norma (1318 N. Sheridan Ave., Pittsburgh, PA 15206 / 412-362-6562) or brought to the Welcome Back Potluck on Sept. 6. Dues paid by new members joining after April 1, 2007 are credited as having been paid for 07-08.

Directions to Norma Lipscomb's (in Highland Park)

1318 N. Sheridan Ave., Pittsburgh, PA 15206 / 412-362-6562

From the East, South or West via Fifth Avenue

Turn on Highland Ave. Continue through East Liberty, pass Home Depot on right, through the light (East Liberty Blvd.). Continue on Highland through next light (Stanton Ave.) to a stop sign (Bryant St.). Turn RIGHT at Grafton St. (the next street past Bryant). The first left off Grafton is the 1300 block of Sheridan (1318 is on the right). Park on Grafton or Sheridan.

From the North

Cross Highland Park Bridge. Stay in right lane to exit on Butler. Turn LEFT at first light and drive up through the zoo, bearing right at the animal-decorated wall. Turn LEFT at first intersection onto Bunker Hill. At the top of hill (Park entrance on left), turn RIGHT onto Highland Ave. Go three blocks to Grafton St. and turn LEFT. The first left off Grafton is the 1300 block of Sheridan (1318 is on the left). Park on Grafton or Sheridan.

Directions to Joanne Baxter's

2605 Fountain Hills Drive, Wexford PA 15090 / 724-934-6433

JDBaxter16@comcast.net

From The PA Turnpike:

Take Cranberry exit 28, follow signs to 79 south. Go about 5 miles, take exit 77 Wexford/Rt. 910, turn left onto 910. Go about 1 1/2 miles (through three lights).

Turn right onto Cole Rd. (opposite large white barn on left). Go about 1/2 mile (through two stop signs), turn left onto Fountain Hills Drive. 2605 is on left.

From the Pittsburgh city area:

Take 279 north, which merges onto 79. Take exit 77 Wexford/Rt. 910, turn right onto 910. Go about 1.3 miles (through two lights). Turn right onto Cole Rd. (opposite large white barn on left). Go about 1/2 mile (through two stop signs), turn left onto Fountain Hills Drive. 2605 is on left.

From Route 19, Perry Highway:

From 19, follow signs to 910. Turn left onto 910. Go about 1 mile. Turn right onto Cole Rd. (opposite large white barn on left). Go about 1/2 mile (through two stop signs), turn left onto Fountain Hills Drive. 2605 is on left.

WEBSITE: We need digital images of members' artwork from our recent Focus on Fiber and membership exhibitions to post on our website. Contact Laura at lauratabakman@yahoo.com.

EMAIL UPDATES: Updates are sent out from Ann Taymans at wrt-aat@verizon.net. If you want to receive these updates, please be sure that Ann's name or address is not blocked by your e-mail provider or spam guard.

VESSEL: PHOTO OVERVIEW You can view them on our website. They are available, singly or on CD. Please contact Diana Lyn for prices at dianalamp46@aol.com.

ROO BAGS: If you missed your chance to purchase one-of-a-kind Roo Bags for \$30 to support the *International*, you can still get them at both the PCA and SCC gift shops.

REMINDER:

The Fiberarts Guild has exhibit space in a window at PPG Place downtown. This is a great opportunity to get some exposure for your work.

Contact Michelle Browne if you are interested in helping set-up the display or exhibiting work and for more information about size restrictions.

A Visit With *FI 07* International Artist

By Jean Thomas

One of the many international artists who traveled to Pittsburgh to attend the April 13 gala opening for *Fiberart International 2007* was Feliksas Jakubauskas from Vilnius, Lithuania. His tapestry, "Light From East, Sheet Pulsation," was on display at PCA. (See Jan Myers-Newbury's article in our special April *FI 07* newsletter for more about previous Internationals that included his work.)

Knowing that I would be in Vilnius in June, I sought him out, asked for his e-mail address, and mentioned our upcoming trip. Despite receiving no reply to a subsequent message I sent him, I screwed up my courage when we got to Vilnius and telephoned him from our hotel in the Old Town section of the city. It turned out that he lives in that same area. But when it became clear that we would be unable to find his studio, located in one of the narrow cobblestone streets we had threaded our way through on our morning walking tour, he offered to meet us at our hotel.

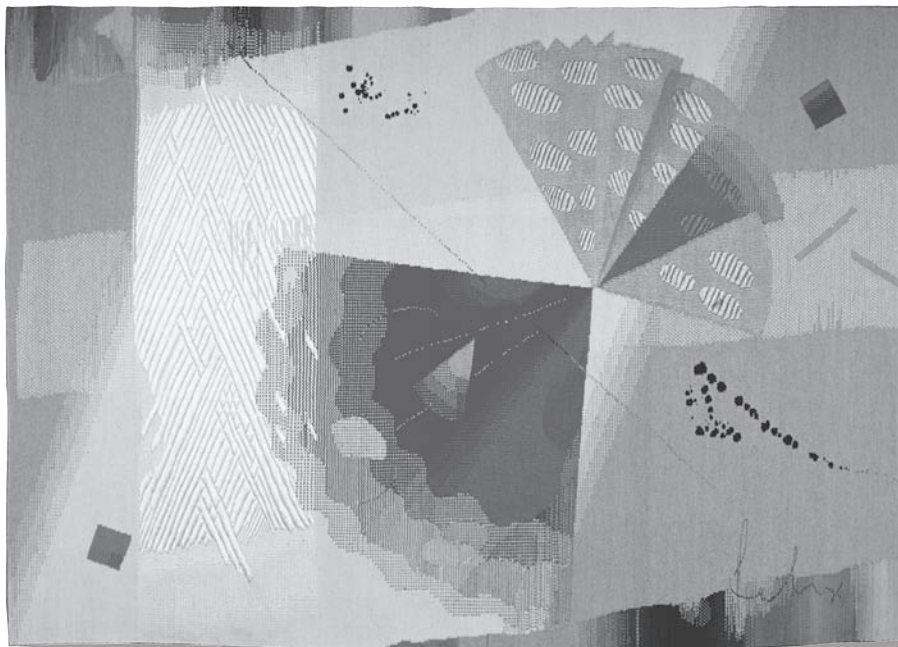
Feliksas arrived in a not-so-small vehicle and transported three of us to his studio. It was located on the very same street our morning guide had pointed out as an area where a lot of upscale renovation was taking place behind the somewhat somber exteriors. Climbing two flights of stairs, we entered a large, handsome room with skylights, fireplace, and a large loom in one corner. His bigger loom had been stored, he said. None of his larger tapestries were evident, and when we looked through his albums while sipping wine, we understood why. In one recent year, for example, he participated in 15 exhibitions. He expressed his warm feelings for Pittsburgh in particular, where he has exhibited in no less than four of our *Fiberart Internationals*, winning best of show in 1997. His tapestries hang far beyond Lithuania—Washington DC, Finland, Sweden, Denmark, Hungary, and even Australia.

As an added plus, Feliksas escorted us to several small galleries in his neighborhood that we would never have found on our own, and to a larger gallery where two of his tapestries were exhibited. The final stop was a gallery close to our hotel, where we saw two exciting fiber exhibitions, one juried by him. It consisted of miniatures all made from linen, reminding me of our *Up Over Down Under* show with its similar size limitations. The other featured very large textile wall hangings by Hungarian artists.

That afternoon with Feliksas Jakubauskas was one of the real highlights of our stay in Vilnius. Yet another benefit from *Fiberart International!*

President's Message

Our new President for 2007-08, Desha Jaramaz, is visiting family in Croatia this summer. Her President's Message will appear in the next issue.



Fiberart International 07

by Jan Bass

I wonder why summer speeds by and winter drags? Regardless, we are preparing to repack the exhibition and send it on its way to the Mint Museum of Craft + Design. They are looking forward to its arrival. Here in Pittsburgh we continue to hear delighted reactions to the show. In fact, we have sold seven pieces to date with rumors of serious buyers looking at more. Chalk up another first for us!

Have you noticed the reviews beginning to appear? Besides the local press—who have been very supportive—Jason Pollen wrote a review in the last *Surface Design Association* newsletter, and *American Craft* just came out with a review in their August/September issue. (See excerpts on page 5.) Look for another review in the next issue of *Fiberarts*. We have been getting coverage outside the US as well. *Textile Forum*, the European edition, sent us their June issue with an article on the exhibition, and I have heard of articles in local papers in Norway and elsewhere. It appears we in Pittsburgh are having an impact on the world of fiber arts. Congratulations to all of you. You deserve the accolades.

One very sad note before closing. Patty Murphy, my co-conspirator, is moving to Florida the first of August. We will miss her. She assures me that email works down there but it won't be the same. Bon Voyage, Patty, you will be missed.

Repacking:

Your last chance for an up-close-and-personal experience with the artwork in *Fiberart International 07!* A few more volunteers are needed on Tuesday, August 21 and possibly Wednesday, August 22 to repack artwork for its traveling venues. Contact Jan Bass bassjanet@gmail.com 412-421-2008.

On *Fiberart International 07* from the National Press

American Craft, August/September 2007 by Graham Shearing

"*Fiberart International*," which is produced by the Fiberarts Guild of Pittsburgh, deliberately seeks out diversity, and in this edition of the triennial exhibition, draws on 14 countries in just under a hundred works...

It is also true that the works on display seem less strident than in previous years, despite any number that are vibrant and colorful. I read that to imply not any lack of interest in current issues (war, politics and social issues are thick on the ground), but rather a greater level of self-assurance—war, for example, can be eloquently discussed with a few yards of unbleached linen thread... one can only just sense the importance of "quiet making" that may be part of the hidden lives of many fiber artists.

...the trek [between the two venues] was worth it since neither venue should be missed. Both spaces and hangs are intimate, which works for almost everything."

Surface Design Newsletter, Summer 07 by Jason Pollen

"Co-directors Janet Bass and Patricia Murphy (along with a host of dedicated volunteers) produced this splendidly orchestrated, deeply satisfying textile triennial... With such a variety of internationally distinguished fiber artists, one gets to see a vast array of individualized approaches. Elegant and inspired needlework is juxtaposed with bold sculptural statements; innovative, abstract, lyrical quilting in cotton is paired with politically charged, digitally manipulated imagery on polyester banner fabric. Photo imagery on Jacquard woven scrolls meets up with the simplest running stitch. The visual voices are alternatively subtle and poetic, poignant and powerful... The jurors chose works that transcend process and materials, works that seek to articulate meaning through various approaches of making... The overall level of the work speaks to the heights to which our field is aspiring and reaching!"

Grabowski Workshops

By Jean Thomas

It was a full house both days for Kerr Grabowski's back-to-back workshops on Deconstructed Screen Printing. At the end of each day, enthusiastic participants had created an amazing array of images under Grabowski's relaxed tutelage.

"Great artist, wonderful woman, very giving and easy to talk to. Exciting techniques. Soooo glad I took the workshop and would jump at the chance to do a week-long with her."

— Jan Bass (detail top)

"It was an intriguing new way to use a silk screen, plus it was fun and easy."

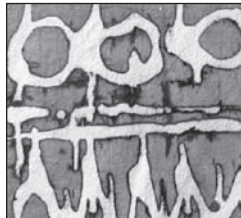
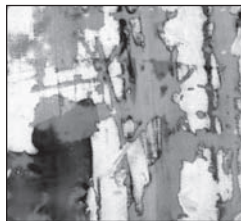
— Jane Ogren (detail center)

"The technique has many possibilities, and you can make it your own. She was a terrific teacher."

— Laura Tabakman (detail bottom)

So what's "deconstructed"? Kerr laughed when asked to define it and replied that it was a title "kind of made up" the night before a proposal was due. (The dictionary defines it as "dismantled.") But it actually conveys what happens during the process. A thick application of dye mixed with an activator, a gooey substance made from sodium alginate and sodium carbonate, is applied to a screen and allowed to dry. It acts as a resist during printing, but in making multiple prints from that screen, the image begins to break down (deconstruct) in really interesting ways.

Workshops are a great way to expand your repertoire of techniques, to experiment with an unfamiliar process, and to just spend a day creatively "playing." If you missed Kerr's workshop—or even if you didn't—there's another opportunity coming in October when Carol Ann Rafferty conducts a workshop on Creating Devore Fabric. The description and registration form are included in this issue.



If you missed the latest review of *Fiberart International 07* in the Pittsburgh Post-Gazette, here it is...

Art Review: Some strong expressions weave into *Fiberart International*

Wednesday, July 25, 2007

By Mary Thomas, Pittsburgh Post-Gazette

Although the local arts focus has been on glass this year, fiber also has a dynamic presence in the form of *Fiberart International 2007*, showing work from 14 countries.

The new triennial exhibition, organized by the Fiberarts Guild of Pittsburgh, commands, befitting its title, an international reputation as a barometer of contemporary fiber art expression.

The jurors were Lois Moran, until recently *American Craft* magazine editor in chief, and artists Dorothy Caldwell, an American living in Canada, and Naomi Kobayashi of Japan.

Ninety-three works by 94 artists offer a look at the diversity of fiber art being made today, from pieces more akin to paintings to somewhat traditional manifestations of a particular technique. Because of its size, the show is exhibited at both the Society for Contemporary Craft and the Pittsburgh Center for the Arts. Six of the works have sold.

Each incarnation of the *International* has a different character—that dependent upon current trends, variety of submissions and jurors—and this, the 19th, appears less flashy than recent editions. But that's compensated for by several exceptional, quietly jarring pieces.

Adrienne Sloane's "Cost of War," for example, takes a moment to deliver its impact, as the viewer approaches the rows of 14 small forms tacked to the wall. They are knitted bodies, small grayish figures stretched horizontally, with sagging heads, feet and genitalia.

Larger, but again delaying impact until the last of three panels are "read," is Ingrid Bachmann's "Distant Echoes," moving from tumultuous gray clouds to bodies lying in a street.

The viewer also has to stay with Tilleke Schwarz's "Re Do" for a few sentences, but it's time well invested, as this compelling embroidered work appears to represent the struggles of a stroke survivor to regain order.

Formalism is celebrated and/or deconstructed in Mi-Kyoung Lee's egg-shaped, smile-inducing "Untitled" wall installation, comprising 5,000 rubber bands and 2,500 nails.



Helenora Dejak, Post-Gazette
"Old Books on Japan," by Yasuko Fujino
Click photo for larger image.

Mami Ide's "Reconstruction—Red Space," Linda Colish's "Rendered Anonymous" and Toot Reid's "Twenty" are abstract and tactile, inviting visitors to scroll their surfaces, discovering anew at each pass.

Carol Watkins' photo-transferred and sequined, mysterious "Lady of the Wood III"; Leslie Carabas' pieced and quilted, optically illusory "Interior"; and Dorie Millerson's poignant, needlepoint lace "Attachments II" illustrate how a variety of techniques, in the right hands, can feed an inspired vision.

Three Guild members are represented, each distinguished by the interpretations they bring to their chosen modes of expression. They are Jan Myers-Newbury, who shows her command of shibori in "Urubamba"; Camilla Brent Pearce, who creates a mini-world combining rust and silk in "Rustbelt Garden"; and Akiko Kotani, whose tri-panel "Octobre en Auvillan #2" almost takes wing (her solo exhibition, "Akiko Kotani: Drawing with Silk and Graphite," is at the Westmoreland Museum of American Art).

Not everything is laudable. Because the bar has been raised so high for this exhibition, average works pale. Also, some appear to have slipped through jurying because they present well on a slide. One piece that mixes media, for example, reads OK as a two-dimensional composition but doesn't jell in actuality. Beadwork has figured prominently in fiber in recent years, but a spider with doll head appears more naive than camp.

Sometimes presentation holds a piece back, such as the chalky mannequin (and title) of Noel Palomo-Lovinski's "Bridezilla"; Kiki Revoir's ruffy "ripple" would benefit from a prop that is more undulating than the rectangle it's draped over.

Still, this is an important and edifying show. And it's a feather in Pittsburgh's cap that it originates here.

The exhibition will travel next to The Mint Museum of Craft + Design in Charlotte, N.C.

"*Fiberart*" continues through Aug. 19 (www.fiberartinternational.org). Pittsburgh Center for the Arts, 6300 Fifth Ave., is open 10 a.m. to 5 p.m. Tuesdays through Saturdays and noon to 5 p.m. Sundays (suggested donation \$5; 412-361-0873 or www.pittsburgharts.org). The Society for Contemporary Craft, 2100 Smallman St., is open 10 a.m. to 5 p.m. Tuesdays through Saturdays (admission free; 412-261-7003 or www.contemporarycraft.org). A catalog that illustrates all works in color and provides artist information is \$25.



Darrell Sapp, Post-Gazette
Canadian artist Ingrid Bachmann's "Distant Echoes," three 98-inch-high fabric panels, is among several politically inspired works in *Fiberart International 2007* at the Pittsburgh Center for the Arts and the Society for Contemporary Craft.
Click photo for larger image.

Related articles

Diversity is on the agenda as artists from around the world convene for 19th *Fiberart International*
City continues glass celebrations: 7/25/07

Call for Entries

Aug. 20. *Quilts=Art=Quilts*. Schweinfurth Memorial Art Center, Auburn, NY. myartcenter.org

Aug. 25. *12th Annual Regional Juried Exhibition*. Southwestern PA Council for the Arts, Southern Alleghenies Museum of Art at Ligonier Valley. spcars.org

Sept. 7. *Art of the Quilt*. American Sewing Expo, Novi, MI. americansewingexpo.com

Sept. 7. *Beyond Basketry*. National juried exhibition, Dairy Barn Arts Center, Athens, OH. dairybarn.org

Sept. 7. *Northeast Quilts Unlimited 21st Annual Exhibition*. Arts Guild of Old Forge, NY. artscenteroldforge.org

Sept. 10. *By the Hands of Men*. Rocky Mountain Quilt Museum, Golden, CO. rmqm.org

Sept. 14. *ArtQuilt Elements* (formerly *ArtQuilts* at the Sedgwick). Biennial juried exhibit April-May 2008. Wayne Art Center, Wayne, PA. wayneart.org/exhibits

Sept. 15. *Artist as Quiltmaker*. 13th Biennial sponsored by the Ohio Arts Council and the Embroiderer's Guild of Cleveland, Oberlin, OH. favagallery.org (look under Gallery)

Sept. 17. *Art Quilts XII*. Chandler, AZ. members.aol.com/sdihowell

Sept. 20. *Craftforms 2007*. Wayne Art Center, Wayne, PA. wayneart.org/exhibits

Nov. 1. *New Quilts From an Old Favorite: Sawtooth Contest*. The show will travel through Dec. 2008. quiltmuseum.org

Nov. 1 and Jan. 1, 2008. Best of Artists book competitions, by state and medium. bestofartists.com

Nov. 30. *Beads of Whimsy*. International show sponsored by the Upper Midwest Bead Society and The Textile Center, Minneapolis, MN. textilecentermn.org

Dec. 15. *Living with Beauty: Handwoven Textiles for the Home*. Hagnauner Gallery, Manitou Springs, CO. pikespeakweavers.org

Jan. 15, 2008. *Focus Fiber 2008*. Co-sponsored by the Textile Art Alliance of the Cleveland Museum of Art and the Cleveland State University Art Gallery. focus_fiber08@earthlink.net

April 4-26, 2008. *Fiberarts Guild Spring Membership Exhibition*. Borelli-Edwards Galleries, 3583 Butler Street, Lawrenceville. Entry deadline and other info coming soon.

April 14, 2008. *Amazing Art Quilts*, juried exhibit for SAQA (Studio Art Quilt Associates) from three regions around Virginia (VA/NC/SC & TN/KY & MD/PA/WVA). Staunton Augusta Art Center, Staunton, VA. saqa.com

The Radius Gallery in The State Museum of PA, Harrisburg, is introducing a new series of bi-monthly, themed exhibitions showcasing PA craftsmen's work juried by the Radius selection committee. No entry fees, digital entries only, all work must be for sale. 717-787-5590 or radiusgallery.com

The first show is *Tea Traditions*, Sept.-Oct. 2007, honoring the craft that compliments tea. Entry deadline Aug. 6. Tea-related items include but are not limited to handmade pots, bowls, cozies, canisters, infusers, cups.

The Nov.-Dec. show is *Boxes*. Entry deadline Oct. 8. Craftsmen in all media may submit boxes, both functional and decorative. For this showcase, a box is defined as a vessel of any shape having a lid that raises, slides, or can be removed.

2008 Membership Shows

IN THE SPRING:

Location: Borelli-Edwards Galleries, 3583 Butler Street, Lawrenceville

Dates: Friday, April 4 thru Saturday, April 26, 2008
All other details will be forthcoming soon.

IN LATE FALL/WINTER:

Making Connections (Use your imagination!)

Location: Pittsburgh Center for the Arts

Dates: Nov.-Dec 2008 / Jan. 2009

Juror: Nancy Davidson

Entry deadline to be announced.

Connections

Joan Bast is doing two craft shows in August: Mt.Gretna Outdoor Art Show Aug.18-19 www.mtgretnaarts.com, and Pocono State Crafts Festival Aug. 25-26 www.poconocrafts.com. She taught beadwork at Common Ground, McDaniel College, Westminster, MD July 9-13.

New member, **Janet Edmonds** from England, has an article in the July issue of *Quilting Arts Magazine* titled "Rolls and Tubes for Surface and Structure."

See and hear about **Karen Page's** journey through Kyrgyzstan, and the impact her experiences have had on her as an artist, at her slide lecture Thurs. Oct. 4, 6:30-8:30 pm (free!) at PCA.

Carolyn Carson's "Black Smoke of Six Million" was juried into the *2007 National Small Art Quilt Works Exhibition* at The Main Street Gallery in Groton NY.

Passle Helminski's recent exhibitions include: *Toxic Color* at exit (a gallery space), Cleveland, OH; *Summertime 2007* at Fredericksburg Center for the Creative Arts; *Wish You Were Here 6* at A.I.R. Gallery, NYC; *Ruth Jageman Panorama* at Raymond Blasco Memorial Library, Erie, PA; *2007 Spring Open Juried Exhibition*, Wayne Art Center, Wayne, PA; *Visions from the Heart*, Barnum Festival & the Kennedy Center, NYC; *Influx: AAP New Member Exhibit*, Pittsburgh; *Images 2007*, Central Pennsylvania Festival of the Arts, State College, PA; *7th Annual Lily Festival*, Stonewall Gallery, Cambridge Springs, PA.

Newsletter Staff:

CO-EDITORS:

Jean Thomas

jwt77@verizon.net

Mary Towner

mltowner2@yahoo.com

PRODUCTION:

Martha Wasik/graphic arts

DISTRIBUTION:

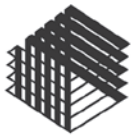
Norma Lipscomb

CONTRIBUTORS:

Jan Bass

fiberartspgh.org • fiberartspgh@yahoo.com

© 2007 Fiberarts Guild of Pittsburgh, Inc.



fiberarts guild
of pittsburgh, inc.

P.O. BOX 5478
PITTSBURGH PA 15206

NON-PROFIT ORG
U.S. POSTAGE
PAID
PITTSBURGH PA
PERMIT #5579

Inside:

PROGRAM LISTING FOR 2007-08
FIBERART INTERNATIONAL UPDATE
DEVORE WORKSHOP FORM
REVIEWS & NEWS
EXHIBITION OPPORTUNITIES

REMEMBER TO SEND US ANY
CORRECTIONS OR UPDATES FOR
THE YEARBOOK BY AUGUST 27!



The new web site is up and running!
Take a look at www.fiberartspgh.org

Kudos and thanks to **Laura Tabakman**, our "web maven". If you'd like your work to be featured on the site, send her your images; she can work with almost any kind. Also contact her if you'd like to link your website to ours. lauratabakman@yahoo.com