

President's Message



**Dear
Members,**

My husband has a computer game called "Text Twist" where you are given six or seven scrambled letters, and you have to make words from them. Sometimes when I look at the letters, I can't see any words; but once I get one word, I can find others. I find the same thing happens with my fiberart. Sometimes I can't think of anything to do, but once I get one idea, others follow.

I know that some of you have everything planned out before you start working on your art. However, I was greatly comforted at Nancy Crow's lecture when she said that she has to put pieces of fabric on a big board and move things around until she gets what she wants. Whichever your method of working, I hope you will have time during the cold winter days to play around with your art. Whether you are working on a piece for a show or just having fun, winter days when you are forced to stay inside seem to be a great time to do artwork.

This is also the time of year when we nominate members to be on the Board of Directors. Think of whom you would like to see as your future officers and committee chairs – or consider being on the Board yourself- and get in touch with a member of the nominating committee to give them your suggestions.

Impressions of Dry Skills Play Day

by Carolyn Carson

Having been a member of the Guild for over two years, I have attended numerous events, but I think this was one of my favorites. Whereas the other events are always inspirational and often educational, this was much more of a social event, due primarily to its lack of structure. Although some of us in attendance had coerced another Guild member into making the commitment to teach us something at the event, many arrived with no particular plans. As a result, it was a mixed group of members teaching or explaining other skills such as how to freeform crochet or use the embellisher machine (Betsy and I had each brought an embellisher and she provided sewing machines, too) as well as those who just brought their own work to bead or stitch or quilt or knit while we talked, listened and shared. I was inspired by what others were doing, and I learned, but more importantly, I got to know other Guild members on a different level. We talked about family, about children, about all kinds of things. We shared. We bonded! Unlike the Fiber Conversations, we were able to converse in small groups, sometimes on a one-to-one basis, without other distractions. For me, the event had meaning beyond the actual activity.

For many decades throughout American history, women, especially those on the frontier, gathered together for regular quilting bees. Quilts were an essential for most families, providing warmth on those cold winter nights. Economic necessity forced women to be frugal, so saved fabric scraps provided the palette from which they created beautiful designs. In an era when social convention as well as the arduous demands of family limited any time women could devote to a creative endeavor, they channeled their artistic energies into making utilitarian objects such as quilts. Spending days and weeks in isolation, women looked forward to the quilting bee, which served to abate that chronic loneliness, so characteristic of life on the plains in 19th Century America. A major event, the quilting bee allowed women to gather together for an entire day while they quilted the quilt tops that they had each designed individually. They shared their joys and hardships, understanding, comforting and supporting each other while they stitched.

And isn't that, in part, what the Guild offers? Only other artists truly understand our need to create, our need to produce an object unlike anything else that is a reflection of our inner soul and voice. Only other artists know our pain of rejection and our joy of acceptance. Like our foremothers, we create in fiber. Like our foremothers, we create in isolation. And like our foremothers, we still need and want the support and comfort of being with others who intrinsically understand. Dry skills play day was a time to share not just our art, but a portion of ourselves.

**Don't miss the Wet Skills Play Day on March 7th!
See page 4 for more information.**

Upcoming Fiberarts Guild Shows At-A-Glance

Look for further info in this and upcoming newsletters:

Sleight of Hand

Playing Card Project

March 20-May 18, 2010 at Borelli-Edwards Galleries

re.CYCLE.fiber

Nov. 19, 2010-Jan. 2011 at Pittsburgh Center for the Arts

Making Connections Makes News

Making Connections, our membership show that just closed at the PCA, was reviewed by both Kurt Shaw in the *Tribune-Review*, December 21, 2008, and by Kate McCaffrey in the *Pittsburgh Post-Gazette*, December 30, 2008.

Following are excerpts from each. First, from Kurt Shaw:

MARY TOWNER'S piece "FGP" actually is a chain made from connectable and otherwise disposable milk carton caps. Collected by several Guild members, each cap in the chain bears the name of one Fiberarts Guild of Pittsburgh member as of Nov. 7, 2008.

"I moved to Pittsburgh six years ago knowing almost no one," Towner says. "The Fiberarts Guild became my first community here, offering meaningful and lasting connections."

The caps offer a unique way to express this transformative power of connection.

SHARON WALL'S massive quilt "The Mother, The Daughter, and the DNA Code" dominates the larger of the two galleries on the first floor that hold the exhibit. Wall began the quilt after doctors had told her that her various health conditions were genetic. "I decided that I wanted to create a quilt about the medical DNA connections that may occur between female family members," Wall says.

Thus, the rainbow-colored silhouettes of the two life-size female figures in the piece actually are those of Wall's daughter (the thin one) and of herself (the stout one.)

"Our bodies are filled with an organic matrix of colors that relate to the color-coded medical images," she says. "The similar DNA markers above our heads are meant to represent our DNA code connections."

PATRICIA MILFORD also addresses familial connections with her piece, "Mothers and Daughters." One of two cloaks by the artist on display, Milford says the piece embodies the concept of making connections at a personal level. "The title refers to my connection with my mother, who taught me to knit and who knitted the leaves, which are on the cloak, and her mother, who taught me to crochet," Milford says. "In making the cloak, I felt a very strong connection with the women of my family, present and past, who were creative in so many ways.

PENNY MATEER makes reference to her father, Dr. Frank Mateer, a renal specialist who died in 2006 at the age of 85, with her piece "My Dad's Pads, Things We Found in our Parent's House #1." Basically, two prescription pads made of fabric replicate the actual pads her father used. Every prescription contains a quote of something her father always said—such as, "We'll get you out of here in no time," and "Listen to the patient. He's telling you the diagnosis." "My father was known for having an incredible medical mind," Mateer says. "Many of these he said so many times that they are part of our family vernacular."

www.pittsburghlive.com/x/pittsburghtrib/search/s_603571.html

Here are some comments from Kate McCaffrey:

The smaller, adjoining room holds some pieces that are simply fun.

How else to describe the felt pierogi dress? **DAVID WATTS** used felt and fiberfill to create slightly larger than normal pierogies and sewed the ends together, forming a sleeveless mini-dress. The result of "Putting on the Pounds" is a chuckle at the Picksburgh yinzer in all of us and the thought "Mmmm ... pierogies."

Equally cool is **LAURA TABAKMAN'S** "Floating Garden—Connected Through Air." The artist used stiffened rusted silk to create a garden jutting out of the wall. The brownish/tan flowers float like the tops of jellyfish, some open, some delicate balls. Thin wire stems stuck into the wall keep them afloat.

How does a floating garden make a connection? Tabakman's artist statement explained, "We all share the same air... This floating garden connects to the viewer through the small portion of air they share."

www.post-gazette.com/pg/08365/938407-42.stm

And finally, a comment by a guest on the opening night:

I've rarely been to an opening that felt so cheerfully festive. I was surprised at how many members brought friends and family with them. There were several shows opening that night at PCA, but ours was by far the most crowded. "Everyone's down here," someone said. I think this speaks of the quality, diversity and drama of the show.



Inside An Installation

by Mary Towner

On November 10, 2008 I had the memorable experience of helping exhibition co-chairs Laura Tabakman and Penny Mateer install *Making Connections* at the Pittsburgh Center for the Arts. I had installed shows of my own work, but this was my first challenge of installing a group show.

The intimacy of handling the work evoked a respect and admiration for others' creativity and skills. I was impressed with the great diversity of work... but that very diversity threw me at first. How would it ever become a coherent show? But soon I was inspired by Laura and Penny as they proceeded energetically yet calmly.

We began to rough the show out, discussing the merits of various placements and groupings. We spent an initial hour or more climbing among the many pedestals in PCA's storeroom (an adventure in itself), searching for displays for the sculptural work. Two return trips to the storeroom followed, during which we moved and considered every prop there!

While Laura worked in the smaller gallery, Penny and I each took a long wall in the large space. We spaced work by laying it out on the floor, took a deep breath, then proceeded piece by piece to install the work. We hung and tweaked, watching not only vertical and horizontal placement but also the relationships among the work. How satisfying to finally step back and behold the completed wall!

Both the overall show design and the installing of each piece were visually challenging tasks, involving placement, spacing, and constant awareness and re-evaluation of visual relationships—not unlike the skills involved in one's own individual creative production. I was impressed with what an organic process installation must be—intuition and flexibility are essential. One must note similarities, repetitions and unifying elements, repeatedly changing placement for optimal display of both individual pieces and synchronous relationships.

I returned a few days later to a completed and dramatically presented exhibition. Several pieces had moved once again—for the better, of course. These two artists had put several more days' work into installing, taking the time and care needed for perfect presentation. What's more, they were not only skilled but even amiable! The Guild's gratitude goes out to them.

Ours is a multi-talented organization, and this was rewarding and instructive for me. I highly recommend the experience of installing one of our shows.



P R O G R A M S

Betsy Coleman, Chair
betsyclmn1@verizon.net 412-322-9234
Susan Coen, Fall 2009-2010 Chair
scoen@zoominternet.net 724-789-1184

February 20 Friday 7pm
Lecture: Risë Nagin – Interplay of Color & Design

Sixth Presbyterian Church, Forbes & Murray Aves., Squirrel Hill

Known for her distinctive handling of materials, technique and color, Guild member Risë Nagin's work marries the concerns of craft with those of other contemporary art forms. Risë's kimonos, quilts and books have been exhibited internationally and are included in museum, corporate and private collections in the US, Japan and Europe. Honors include the Quilts Japan Prize, *Quilt National '91* Best of Show, and an Individual Fellowship from the Pennsylvania Council on the Arts.

February 21 Saturday 10am - 3pm
Workshop: Risë Nagin – Interplay of Color & Design

Sixth Presbyterian Church, Forbes & Murray Aves., Squirrel Hill

Fees \$45 members / \$60 non-members. There will not be a materials fee, but participants will have a long supply list to bring from home.

The workshop will involve a number of two-dimensional design exercises that illustrate the varied effects that result from simple changes in color. The class will encourage participants to play and experiment, with the goal of developing ideas that can be used in their work.

March 7 Saturday 9am
ALL-NEW PROGRAM! Wet Skill Play Day

Sixth Presbyterian Church, Forbes & Murray Aves., Squirrel Hill

Members \$1/half day, \$2/full day;
Non-members \$5/half day, \$10/full day

Building on our Skill Sharing programs from past years, we are offering these expanded Skill Play Days. Participants will have the fun of working with other artists, both learning and sharing skills. (Choose half or full day. No pre-registration needed; just bring your materials and enthusiasm.)

March 24 Tuesday 7-9pm
Lecture: Mary Kobet –

Slide presentation featuring the work of Anna Goebel

Sixth Presbyterian Church, Forbes & Murray Aves., Squirrel Hill

A former student of Professor Anna Goebel, Guild member Mary Kobet will present a slide show of Goebel's fiberart and studio classes in Poland. Internationally known artist Anna Goebel studied under Magdalena Abakanowicz and works with spatial compositions and paperart. Her work has been shown in Europe, Japan, Australia, South America, Israel and the US.

April 22 Wednesday 7-9pm

Lecture: Joanne Baxter –
Let Your Inner Child Come Out and Play

Sixth Presbyterian Church, Forbes & Murray Aves., Squirrel Hill

Guild member Joanne Baxter will present a slide lecture on art dolls. Joanne has studied with nationally known doll artists but considers herself mainly self-taught. Her work has evolved over 25 years. She now produces Goddess Art Dolls which are based on her life experiences or people close to her. They are made from fabric, with painted faces, various fibers for hair, and accessorized.

May 15 Friday 7-9pm

Lecture: Jiyoung Chung on Joomchi, Korean traditional paper making

Society for Contemporary Craft, 2100 Smallman Street

Jiyoung Chung received her BFA (painting) from Rhode Island School of Design with honor and award, and MFA (print/media) from Cranbrook Academy of Art. She has had numerous solo and group exhibitions throughout Korea, China, Finland, France and US. Her work is in the permanent collection of Museum of Art & Design, New York, NY.

May 15 & 16 Sat. & Sun. 10am-4pm

Workshop: Jiyoung Chung – Color Joomchi

Fee for the two days is \$150 for members plus \$30 materials fee.

Joomchi is Korean traditional paper making method creating layered, textural, and imagery surface just by using water and already existing thin papers. Unlike other paper making techniques, it requires no special equipments or chemicals to combine the layers. It can be incorporated into surface design, collage, new way of drawing, self-standing object: 2-D & 3-D either functional or fine art oriented.

NOTE Registration is by mail or e-mail with SCC:

Society for Contemporary Craft
2100 Smallman Street
Pittsburgh, PA 15222
thestudio@contemporarycraft.org

Note: Critique sessions may be scheduled before each lecture; check your monthly email Update. Members can bring their in-progress or finished work to Critiques for supportive and enjoyable feedback. Participants report that these sessions are very helpful for their work and in getting to know fellow artists.



WORKSHOPS PAST, PRESENT (almost) AND FUTURE

by Jean Thomas

One of the many benefits of Fiberart Guild memberships is the opportunity to participate in a variety of workshops. Some members choose a workshop to further develop a skill they already have, while others want to explore something brand new. Whichever route you go, here's a rundown on 2008-09 workshops.

PAST

Here's what some of the participants had to say about the **Marbling** workshop led by **Elin Noble**, October 25, 2008. (See photos above)

I liked being up close with Elin Noble, who proved to be one more generous artist that we are lucky to meet through the Guild. I liked watching her do the marbling and having the chance to see more of her art (and touch it). Desha Jaramaz

I regret that I haven't had the time to play with the technique since the workshop but it was soooooo much fun. And to think, I can use all those "ugly" fabrics by "playing" and turn them to "wonderfuls". Fannie White

I took my supplies on vacation and did a demo for my friends and that was fun. I need larger finished pieces. My mind is working on it. Betsy Coleman

PRESENT (almost)

No matter what fiberart medium you choose, the interplay of color and design is of primary importance. Don't miss the opportunity to benefit (and be inspired) from this month's workshop, **Interplay of Color & Design**, led by one of our outstanding members, **Risë Nagin**.

Saturday, February 21, from 10 am to 5 pm at Sixth Presbyterian Church in Squirrel Hill.

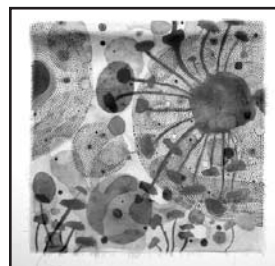


FUTURE

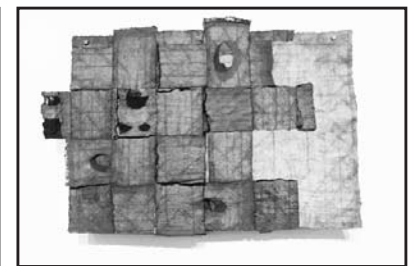
Jiyoung Chung will instruct participants in **Color Joomchi**, a two-day workshop presented jointly with Society for Contemporary Craft and the Fiberarts Guild. *Joomchi* is a Korean traditional paper making method creating layered, textural, and imagery surface just by using water and already existing thin papers. Unlike other paper making techniques, it requires no special equipment or chemicals to combine the layers. It can be incorporated into surface design, collage, new way of drawing, self-standing object: 2-D & 3-D either functional or fine art oriented.

Saturday and Sunday, May 16 and 17 at SCC.

(See Program Listings on page 4 for details on workshops.)



Risë Nagin



Jiyoung Chung

Potluck

By Jean Thomas

Even though snow was still on the ground, the sun shown as 83 enthusiastic FGP members and their guests gathered at the PCA for the annual Potluck Fundraiser and Artists' Talk event on January 22. "Better than ever!" exclaimed one Guild member looking around at the room-long array of fiber related "goodies" on a series of tables in Simmons Hall at the PCA. Attached to each batch of items that had left someone's studio that morning was a paper bag for dropping tickets in Chinese Auction style. At one end of the room was another group of tables loaded with "better than ever" culinary creations from Fiberarts cooks.

food...

But perhaps best of all was the opportunity to hear members who had work in the *Making Connections* exhibition talk about their pieces. Once tickets were purchased and some 120 bags were attached to boxes and bags of tempting items in Simmons Hall, we headed upstairs to the galleries where some 18 exhibiting artists talked ideas, techniques, inspiration, serendipity, and challenges that went into creating their works and how they related to the Connections theme of the show. More than one mentioned another work that didn't make the show, even though it was one on which they had spent much more time and thought. Some absent artists had also sent statements to be read.

friends...

Back downstairs dietary caution was mostly ignored (who could pass up perogies after hearing David Watts talk about his perogie dress) as the urge to sample a bit of everything took over. Once the last minute warning for depositing tickets in paper bags had been issued, then the awaited moment for drawing tickets began. Kudos to Betsy Coleman and team for the better than ever distribution of items to the winning ticket holders.

fantastic bargains!

And now for the bottom line! Treasurer Sylvia Marko report that proceeds were \$532 from the Chinese Auction and \$235 from the Silent Auction for a total of \$767.





CONNECTIONS

Terri Perpich received a juror's award in Southern Alleghenies Museum of Art, *Art in Common*. Her 2008 exhibitions included the Hoyt Mid Atlantic (juried by Douglas Fogle, Curator of Contemporary Art at Carnegie Museum); the *AQUEOUS* International Watercolor Exhibition at Third Street Gallery, Carnegie; Sweetwater Center for the Arts *Figure Show* in Sewickley; and Artform Gallery in Lower Burrell. Terri was also the judge for October's Penn Art Association Show at Boyce College.

Ken Beer and **Terri Perpich's** monotype on fiberglass fabric collaboration was in the Hoyt Mid Atlantic. Ken was also in two 2008 Exhibitions at Altoona and Ligonier's Southern Alleghenies Museums of Art.

Rhoda Taylor received an Award for Excellence for her "Pretzels and Champagne" piece shown in the Southwestern PA Council for the Arts exhibition. She has joined the new Double Door Gallery (formerly the Watercolor Gallery downtown) in Carnegie, next to the Third Street Gallery. She encourages other fiber artists to exhibit there.

Akiko Kotani sent Thanksgiving greetings from Barcelona, Spain where her latest work is at the MX ESPAI 1010 gallery there.

Betty Elias has work in Fein Art Gallery's new show, *Italy... then and now!* January 23 – February 28

Paula Weiner's "Fresh troops" was one of 47 works (out of 400 plus) included in the Bucks County, Pennsylvania's first annual *It's About the Art* exhibition, juried by Jeff Nathanson, former head of International Sculpture Society and Brooke Barrie, founder of Grounds for Sculpture museum in New Jersey. The exhibition opened January 24.

Amber Coppings is among 17 artists selected from hundreds of applicants to participate in the AltCraft section of The American Craft Council Show in Baltimore that will be held Feb. 27 through March 1.

Jane Ogren will be exhibiting her artwork in "Moths to a Flame" at Sweetwater Center for the Arts in Sewickley from Feb. 5 - 28. It is an Edinboro University of PA alumni exhibit. Jane also will be exhibiting two pieces at the Associated Artists of Pittsburgh's "99" exhibit at the PCA from Feb. 7 - March 15.

Atticus Adams, Ken Beer, Mayota Hill, Laverne Kemp, Penny Mateer, Terri Perpich, and Paula Weiner have work in the Society of Yoruba Beads exhibition *Transformations*, PCA, Feb. 7-April 19.

Textiles by **Regina Benson** are currently on view through February 21, 2009 as part of *New Focus: Art Quilts in Small Format*, an invitational exhibition, curated by Judy B. Dales and Kim Ritter, at the Coos Art Museum, in Coos Bay, Oregon.

The Guild Council of Pittsburgh Filmmakers/Pittsburgh Center for the Arts presented the 2008 Service to the Arts Award to **Tina Williams Brewer** on January 9, 2009 in recognition of her national reputation in the art form of making story quilts of great beauty and meaning, her commitment to the Center and its Guilds, her enduring contribution to African American art, and her countless creative and educational endeavors that keep the arts alive.



February "Make It Happen Party" for Fi2010 volunteers.

If you are a veteran volunteer for past Fiberart Internationals, you already know how energizing and informative the occasional volunteer brunch gatherings are. Many of you recall Sally Yunis' sign-up sheets pinned to the wall, or lively sessions in Risë's dining room, or in Michelle's family room. Or if you are a first-time volunteer and wondering what it's all about and what you should do, here's the best way to find out. Come to Norma Lipscomb's house, 1318 N. Sheridan Ave. in Highland Park on February 28 at 11am. There will be briefings on committee responsibilities, progress reports, and time for lots of questions, plus good food and good company.

Have a look at the new web site. It includes the prospectus, juror profiles, and images from previous prize winners. The prospectus has been mailed as well, but many responses are expected from downloaded copies. (Note that on-line submission is preferred, so the jurying experience will not be the same as previous exhibitions.)

Welcome to Camilla Pearce and Deb Meteney, who have joined the Fi2010 team as co-chairs for the Forum. Laura Tabakman will serve as Registrar, assisted by Jean Thomas.

The contracts for traveling the show have been signed with the Memorial Art Museum in Rochester, New York and the San Francisco Museum of Craft + Design.



Sleight of Hand Artists at Work

The *Sleight of Hand* prospectus is now available to the 54 Guild members who are producing images for the deck of playing cards, the Fi2010 fundraising project. Contact Martha Wasik if you did not get yours at the Pot Luck luncheon or you can download a copy from our website. A series of artwork reviews are scheduled where card committee members will facilitate group review of work in a helpful, supportive atmosphere. The first three sessions are February 20, March 24, and April 22 at 3-5 pm before Guild meetings at Sixth Presbyterian Church. Artists should schedule sessions of their choice with Mary Towner. Additional reviews will be announced. Artists may also submit by email or good quality CD images to Mary Towner for card committee review.

Mary Towner • mitowner2@yahoo.com • 724-969-0369

CHECK IT OUT

Check out some favorite web pages shared by our members:

From Leslie Calhoun: This is one of those crazy things I come across every now and then. An ingenious woman who is a quilter at heart. <http://bellasugar.com/2627519>

From Patty Mendys: I found this interesting exhibit now going on at the MOMA. Many of the pieces look like quilts. An interesting study of color! www.moma.org/exhibitions/2008/colorchart/

From Amber Coppings: I love *Craft* magazine. It's a great example of some of the new interest in fiber art in the Indie Craft world. The link is to the Fiber Art section in the magazine's blog. I recommend looking through the magazine and the rest of the blog, too! http://blog.craftzine.com/archive/fiber_art/

From your editors: This site takes you to both our Guild and to Fiberart International 2010 web pages. Check out program dates, download prospectus, consult past newsletters, buy catalogs, etc. <http://fiberartinternational.com/guild/>

Here are some additional items to check out:

Julia Edick, a fiber student in Philadelphia has been creating dye sample books using Procion as well as acid dyes. She is requesting input as to whether she should pursue the idea of marketing the books. Contact her at gulia19@hotmail.com.

Attention quilters, stitchers, and anyone else. Several boxes of fabrics, patterns, and notions are available to an interested member willing to drive to Baden, PA to pick them up. Contact Mary Thomas, 412 263-1925

Salvation Army Annual Fabric Fair, Saturday, April 4, 9 am-2 pm at the Home Economics Building in South Park.

Leslie Golomb is coordinating an effort to make lap shawls for a nursing home. She has kits available for anyone who is interested. Contact her at artwork53@comcast.net.

The Greater Pittsburgh Arts Council is seeking nominations for the 2009 Work of Arts Award in the following categories: Creative Arts and Business Partnership, Best Practices in Arts Management, Arts & Technology, Working Artist, Excellence in Arts Education, and Public Art. Nomination forms can be downloaded from the Council's web page. Nomination forms due in the Council's offices by Friday, February 13, 2009. www.pittsburghartscouncil.org 412-391-2060.

Do you have a unique technique or process for mixed media fiber art? Quilting Art TV is looking for artists to do guest segments with Pokey Bolton as well as to write articles for *Cloth Paper Scissors—Quilting Arts TV*. Send a proposal! submissions@quiltingarts.com.

The Pittsburgh Craft Collective (PCC) is a group of local crafters whose mission is to be a resource for people who craft, from the business-minded all the way to the hobbyist, by focusing on networking, information sharing, and education. Visit their web page to become a member or sign up for their newsletter. <http://pghcraftcollective.com/membership/>

Contemporary Craft

2100 Smallman St., Pittsburgh 15222 / 412-261-7003
www.contemporarycraft.org

Check out their new Winter/Spring 2009 Class schedule. It includes a number of classes and workshops related to fiberarts: beading, book arts, felting, paper, silk scarves, and more.

Pittsburgh Center for the Arts

6300 Fifth Ave., Pittsburgh 15232 / 412-361-0873
www.pittsburgharts.org

99, presented by AAP, Feb. 7-March 14
Check out winter classes on web page

Pittsburgh Knit and Crochet Festival

FOUR POINTS Sheraton, North Mars, PA 16046

Saturday, February 14, 9:00 am – 5 pm

Sunday, February 15, 9:00 am – 4:30 pm

\$10 in advance, \$15 at the door, \$15 both days in advance

42 Exhibitions – Over 40 classes 412-969-7030

www.pghknitandcrochet.com/inside.htm

The Guild will have an informational booth at the Festival. If you can help at the booth, either day, please contact Betsy Coleman betsyclmn1@verizon.net or Susan Coen scoen@zoominternet.net.

Also featured at the Festival on February 14: Three Yarnini Lunch sponsored by Three Rivers Crochet. Proceeds will go to Rwanda Knits and the Women's Shelter:

<http://threeriverscrochet.com>

<http://www.rwandaknits.org>

Fiberarts Guild Yahoo Group

The Fiberarts Guild has launched an online discussion group for its members. It is a Yahoo Group, if any of you are familiar with those. It's a place to let everyone know about interesting things going on in your fiber life, ask questions (about techniques, resources, where to find materials, etc.), let people know about an interesting show happening, or simply start a discussion.

All you need to do is join.

Go to <http://groups.yahoo.com/group/fiberartspgh/>, click on Join this Group, and follow the steps. You have the choice of receiving the emails as they're sent or just reading them when you feel like it. We hope everyone joins. Email Laura Tabakman lauratabakman@yahoo.com with any questions or problems.



CALL FOR ENTRIES

We compile a list of exhibitions that may be of interest to fiber artists. We would not knowingly list unscrupulous galleries. Please check out each show sponsor and use your own judgment about entering the exhibitions.

FEBRUARY 15 "Boys Will Be Boys" exploring the issues of male gender. Show opens March 20. Fe Gallery, Lawrenceville. Email BuyArtToday@gmail.com, www.fegallery.org

MARCH 1 "Art of the State: Pennsylvania 2009" presented by the Greater Harrisburg Arts Council and the State Museum of PA, many categories, www.statemuseumpa.org

MARCH 1 "Surface Matters" for members of the Surface Design Association only, Kansas City, MO, size restriction of 18"x18" www surfacedesign.org

MARCH 20 "Anything Fiber" Studio Channel Islands Art Center located on the campus of California State Univ., Camarillo, CA www.studiochannelislands.org

MARCH 20 "Small Art Quilt Open" Studio Channel Islands Art Center on the campus of California State Univ., Camarillo, CA www.studiochannelislands.org

MARCH 25 "Fibers Expanded" Luke and Eloy Gallery, Butler St., Pittsburgh www.lukeandeloy.ning.com

MARCH 28 "Westmoreland Art Nationals" opportunity to enter two shows for one fee: one at Westmoreland Community College and one at the Westmoreland Arts and Heritage Festival at Twin Lakes Park www.artsandheritage.com

APRIL 1 "Musings" open only to SAQA members living east of the Mississippi River www.saqa.com

MAY 28 "Art Quilts Lowell 2009" The Brush Gallery, Lowell, MA www.thebrush.org

JUNE 13 "National Small Art Quilt Works Exhibition" Main Street Gallery, Groton, NY www.mainstreetgal.com

AUGUST 21 "Fiberart International 2010" sponsored by the Fiberarts Guild of Pittsburgh www.fiberartinternational.org

OCTOBER 1 "Quilting Natural Florida II" Florida Museum of Natural History, Gainesville, FL www.flmnh.ufl.edu/exhibits

New Member Profiles

by Jean Thomas and Donna Shulte

Mary Beth Karchelle-MacCumbee

"Fiber has become my canvas," says new member Mary Beth Karchelle-MacCumbee, who has been sewing ever since she took Miss Nichol's Home Economics class in 7th grade. Over the years she made many costumes for her children and eventually launched her own business making diapers and other household items from natural fibers—cotton flannel, hemp, bamboo. (See her flickr site (<http://www.flickr.com/photos/fabricforeapoops/>) Mary Beth is currently working towards an Associate Art degree a CCAC. She learned about our Guild through Pittsburgh Center for the Arts.

Martha Ressler

It was a fabric collage class taught by Guild member Sandy Kephart that led painter Martha Ressler to join the Fiberarts Guild. Martha studied art at Oberlin College, but just picked up her painting again three years ago. Fabric has always interested Martha. In high school, she made all of her clothes and, later, worked as a factory sewing machine operator. Now, she is busy trying to incorporate images of her paintings into fabric collage. Martha says that Sandy's class gave her a "jump start, but my ideas outrace my production." She is looking forward to June when traveling friends will be returning from Southeast Asia, New Zealand, and Ghana with fabrics for Martha.

Martha's shares her home/studio in Lawrenceville with her photographer husband Jay Ressler. She is represented by Trinity Gallery in Lawrenceville and is a member of PCA, PSA, and the Plein Air Painters of Western Pennsylvania. More about Martha and her work can be found on her website www.martharessler.com. Don't miss the photo of Martha plein air painting while standing on a rooftop!

WORKSHOP REGISTRATION

(PHOTOCOPIES ACCEPTED)

INTERPLAY OF COLOR AND DESIGN
Fee: \$45 members, \$60 non-members
Supply list will be sent

February 21, 2009, 10:00 am - 3:00 pm
Sixth Presbyterian Church
Forbes & Murray Aves., Squirrel Hill

NAME _____ # OF RESERVATIONS _____

ADDRESS _____

CITY _____ STATE _____ ZIP _____

PHONE _____ E-MAIL _____

Please make checks to Fiberarts Guild of Pittsburgh, Inc. and mail to: **Amt enclosed \$ _____**

Betsy Coleman • 1233 Liverpool St. • Pittsburgh PA 15233 / betsyclmn1@verizon.net • 412-322-9234

Directory Update

CHANGES: Mary Kobet marukobet@yahoo.com
Patricia Milford 412-719-8031 milford@cup.edu
Sue Neff neffsenseis@access995.com
Sunny Pickering 412-521-5702 (rather than 621)
Arlene Sakmar seasons1@comcast.net
Judy Symons remove: 412-225-8379
Karen Thickman krthickman@gmail.com

NEW MEMBERS:

Martha Ressler
5272 Holmes St.
Pittsburgh, PA 15201-2438
meressler@gmail.com
martharessler.com
412-781-0184 C- 412-445-7359

Elise Rugolo
400 Glasgow Rd.
Forest Hills, PA 15221-3646
erugolo@verizon.net
erugolo.30art.com
412-651-0436
MM P SD

Mary Beth Karchelle-MacCumbee
132 Queenston Drive
Pittsburgh, PA 15235-5428
MBKMAC1@earthlink.net
412-607-9886
CF P SC WW

RETURNING MEMBER:
Deborah Weber
7723 Lyman St.
Pittsburgh, PA 15221-3187
Deboraptt1@aol.com
412-371-1707

Alexandra Naples
79515 Reamer St.
Greensburg, PA 15601-7903
thefuzzymuse@yahoo.com
724-331-1836
F J SC WR

Newsletter Staff:

CO-EDITORS:

Jean Thomas jwt77@verizon.net
Mary Towner mlowner2@yahoo.com

CONTRIBUTORS:

Carolyn Carson
Donna Shulte

PRODUCTION: Martha Wasik graphic arts inc.

DISTRIBUTION: Norma Lipscomb

fiberartspgh.org • fiberartspgh@yahoo.com

© 2008 Fiberarts Guild of Pittsburgh, Inc.

Membership

If you believe that you are a current Guild member but haven't yet received your 2008-2009 directory it is because your dues for the current year (\$45 - regular, \$20 - student) have not been received. (Due by Oct.1 of our fiscal year.)

It will soon be time to plan the 2009-2010 directory. Please let Norma know that you intend to remain a member in good standing by sending your dues so that your name will not be removed from the membership and newsletter mailing lists. Send to:

Norma Lipscomb
1318 N. Sheridan Ave.
Pittsburgh, PA 15206
Email: naalipscomb@verizon.net
Phone: 412-362-6562

If you DO NOT plan to renew your membership, please let Norma know so she'll stop reminding you! Please notify Norma of any changes in your name, address or phone number or e-mail.

Nominating Committee

At the January 22 meeting, members approved a bylaws change to increase the size of the Board of Directors from nine to twelve members. This will be accomplished by increasing one Director per year for the next three years, so that four nominees instead of three will be presented by the Nominating Committee to serve three-year terms. The next election will be held at the April meeting. To volunteer to serve as a Board member yourself or to submit a name, please contact a member of the nominating committee:

Rae Gold

fleurdili@aol.com 412-521-7840

Mary Ann Klussman

QuiltsMAK@aol.com 412-741-7837

Carole Norulak

carole.norulak@gmail.com 412-351-2071/412-323-4573

Brent Ruka

brentruca@yahoo.com 412-824-9311

JOIN THE FIBERARTS GUILD OF PITTSBURGH: YES! I want to join.

I WANT MORE INFORMATION. Please send me a membership packet or email Norma at naalipscomb@verizon.net

NAME _____

ADDRESS _____

CITY _____ STATE _____ ZIP _____

PHONE 1 _____ PHONE 2 _____

E-MAIL _____ WEBSITE _____

DUES: **\$45** regular membership **\$20** student membership Amt enclosed \$ _____

Mail to: NORMA LIPSCOMB Or contact Norma at naalipscomb@verizon.net for information.

1318 N. SHERIDAN AVE
PITTSBURGH PA 15206

A NEW MEMBER PACKET WILL BE SENT TO YOU.



P.O. BOX 5478
PITTSBURGH PA 15206

NON-PROFIT ORG
U.S. POSTAGE
PAID
PITTSBURGH PA
PERMIT #5579

➔ **MARCH 7 IS**

WET SKILL PLAY DAY!

Dyeing, painting, marbling, felting, screen printing (constructed or deconstructed), and shibori are among the possibilities. Find a friend, bring a project, have fun. Contribute your skills *and* your questions!

Upcoming Fun Programs

SUNDAY	MONDAY	TUESDAY	WEDNESDAY	THURSDAY	FRIDAY	SATURDAY
1	2	3	4	5	6	7
8	9	10	11	12	13	14
15	16	17	18	19	20	21
22	23	24	25	26	27	28

SUNDAY	MONDAY	TUESDAY	WEDNESDAY	THURSDAY	FRIDAY	SATURDAY
	1	2	3	4	5	6
	8	9	10	11	12	13
	15	16	17	18	19	20
	22	23	24	25	26	27
	29	30	31			
MARCH						

Mark your calendars!

February 20 Friday 7pm
Lecture: Risë Nagin – Interplay of Color & Design

February 21 Saturday 10am - 3pm
Workshop: Risë Nagin – Interplay of Color & Design

March 7 Saturday 9am
ALL-NEW PROGRAM! Wet Skill Play Day

March 24 Tuesday 7-9pm
Lecture: Mary Kobet – Slide presentation featuring the work of Anna Goebel